

17



**ARDMAC LTD**

**TOTAL TURNOVER: €157.2M**

ROI TURNOVER: €73.4M

OVERSEAS TURNOVER: €83.8M

YEAR END: 31/12/2018

ADDRESS: Swords Business Campus, Balheary Road, Swords, Co Dublin.

PHONE: 01 894 8800

WEB: www.ardmac.com

KEY EXECUTIVES: Ronan Quinn, CEO; Alan Coakley, Joint Managing Director; Roy Millar, Joint Managing Director.

KEY ACTIVITIES: Main Contractor, General Building, Specialist Contractor, Fit Outs.

**A**rdmac delivers complex high-value workspaces and technical environments in Ireland and Europe. Headquartered in Dublin, the company has regional offices Cork, the UK and Belgium, with an office in Amsterdam planned for 2019.

Ardmac provides trade contracting and main contracting solutions. Markets served include data centres, micro-manufacturing, pharmaceuticals, med-tech and commercial offices. With a robust pipeline, it has worked on projects for over 80% of global pharma and technology companies bringing FDI to Ireland.

A recent strategic project is the Design & Build of an 80-unit modular QC laboratory for a major pharma company in Swords.



Global Pharmaceutical Company, Dublin.

Commercial projects include new office fitouts for Citibank, Hilti and DCC in Dublin. Internationally, it is working on pharma and hyperscale data centre projects in Denmark, Holland, Belgium and Switzerland.

Ardmac's dedicated 'Safety First' programme takes an innovative approach to the management of safety. The programme is designed to embed a safety conscious mindset with continuous improvement around four cornerstones – Demonstrating Ownership & Leadership; Engagement & Participation; Coordination & Management; and Task Planning & Training.

Ardmac was named 'Fit Out Contractor of the Year' at the Irish Fit Out Awards. The company continues to gain recognition with its Lean practices and BIM approach to digital construction.

Ardmac's new dedicated corporate social responsibility programme 'Sky Blue' focuses on responsible business commitments including mental health awareness and eliminating single-use plastics. **C**

18



**SPECIALIST TECHNICAL ENGINEERING SERVICES (STS GROUP)**

**TOTAL TURNOVER: €144.7M**

ROI TURNOVER: €58.4M

INTERNATIONAL TURNOVER: €86.3M

YEAR END: 31/12/2018

ADDRESS: Block 10A, Cleaboy Business Park, Old Kilmeaden Road, Waterford.

PHONE: 051 508009

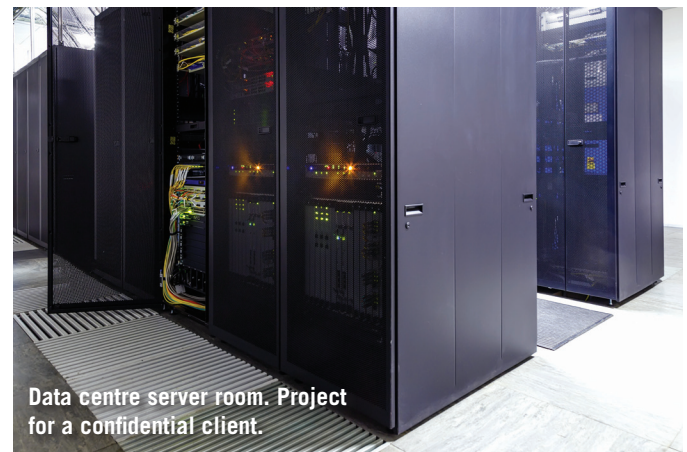
WEB: www.stsgroup.ie

KEY EXECUTIVES: Eddie Walsh, CEO; Richard Hogan, Managing Director; Liam Linehan, Business Development Director; Terry Kelleher, Finance Director.

KEY ACTIVITIES: Electrical Engineering, Design, Instrumentation, Installation and Commissioning Services.

**S**TS Group continues to grow and increase its output in both Irish and international markets, providing electrical installation services across a broad spectrum of sectors.

The company has completed and is currently involved in projects for some of the best-known brands in the pharmaceutical, data



Data centre server room. Project for a confidential client.

centre, medical device, oil and gas, transport, utilities and commercial industries.

The current growth strategy will continue, as it has done over the past number of years, with a significant focus on the continued development of the current management teams and workforce. The company has developed extensive training modules in relation to safety, quality, Lean construction, BIM execution, off-site fabrication, and the environment, along with many others areas.

The pharmaceutical and the data centre industries were the largest sectors that STS participated in last year, and they remain very strong for STS in 2019 and into 2020.

STS is currently involved in projects in Ireland, the UK, Sweden, Denmark, Germany, the Netherlands, Switzerland, Italy, France, Belgium and the Middle East. **C**