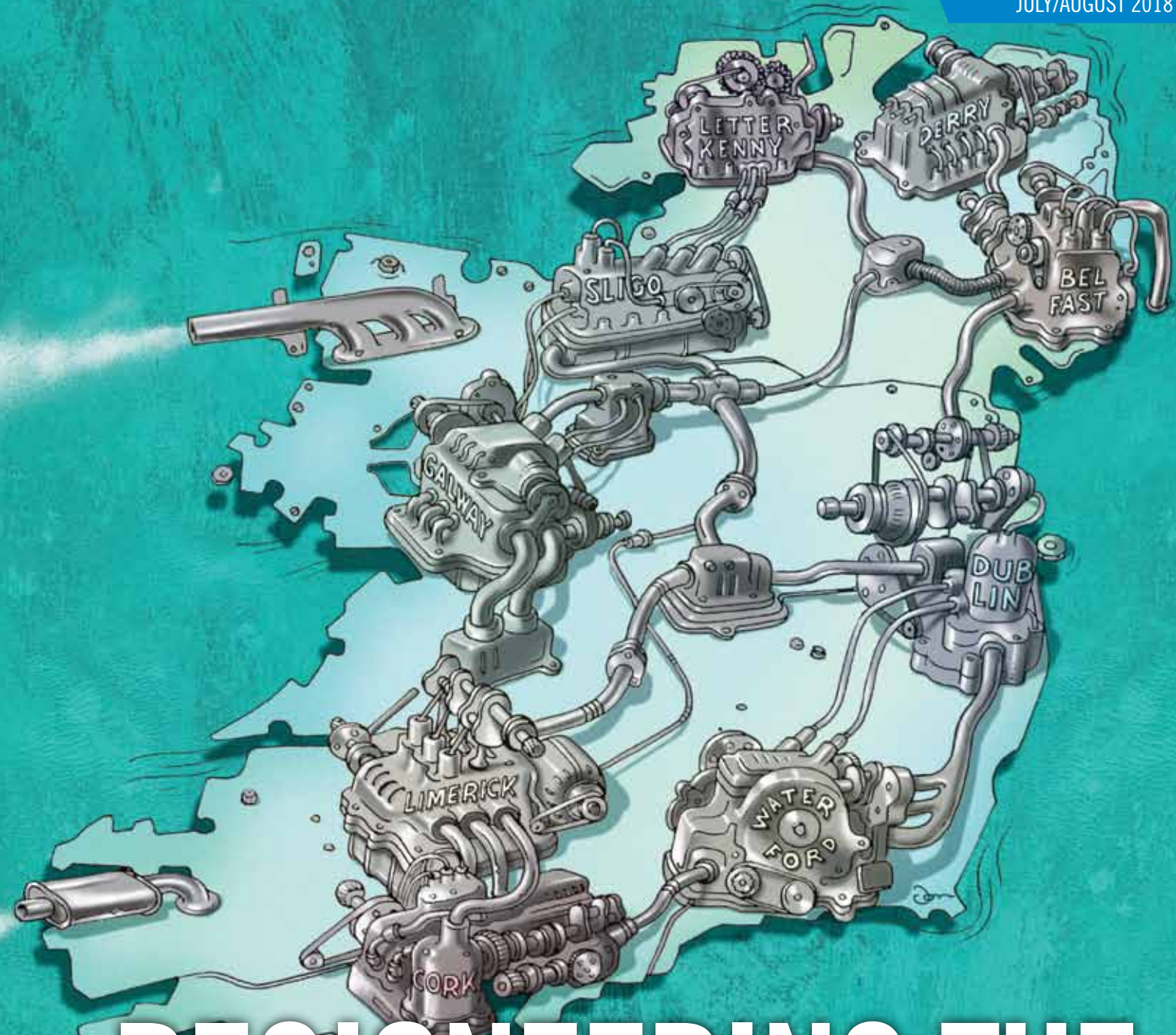


CONSTRUCTION

THE OFFICIAL MAGAZINE OF THE CONSTRUCTION INDUSTRY FEDERATION

JULY/AUGUST 2018



REGIONEERING THE IRISH ECONOMY





Member of the
Construction Industry
Federation

Innovative Software Solutions for the Construction Industry

Your trusted partner in Financial, CRM and Payroll software.

SSG provides the latest software technology solutions to construction companies of all sizes, both in Ireland and overseas. With over three decades of experience working within the construction sector, SSG understands the software requirements of your business.

Our unrivalled expertise, innovation, flexibility and personal service are some of the reasons many construction businesses working in Ireland choose SSG. We help you to optimise sales, service delivery and employee performance, around the clock and from any location. All of our products are supported by high quality implementation,

support and training. To talk with us more on how best we can help you, contact us today.

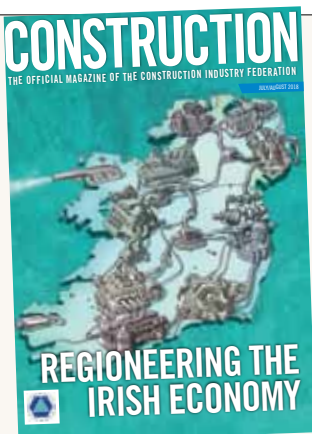
Call Ronnie Fleming, Sales Director,

☎ : +353 (1) 297 3326 ✉ : hello@ssg.ie 💻 : www.ssg.ie



ssg Software Support
Group Limited

EDITORIAL



Cover illustration
by Jon Berkeley.

As increased construction activity starts to appear in regional pockets outside of Dublin, concerns persist about the procurement procedures for projects in the National Development Plan.

The latest Society of Chartered Surveyors Ireland (SCSI) Construction Costs Index further exacerbates the situation as it indicates that construction tender prices increased by 3.95% over the first six months of 2018, and it forecasts that sector inflation could average 7.4% for the year, bringing construction prices back to their level in the first half of 2006. This is just five index points below their peak in 2007. This rate of increase in costs will put further pressure on those involved in public procurement and on the fixed-price tender process.

So, while the outlook for the sector outside of Dublin is starting to improve, important issues need to be resolved to achieve a sustainable level of activity, resulting in local communities across the country benefiting from increased investment and employment.

In this issue of *Construction*, we report from the regions, where there are slow but growing signs of significant construction activity in some areas. We also ask what additional elements need to be put in place to facilitate sustainable activity.

In our Category Focus, we ask leading figures in the civils sector what impact, if any, the National

Development Plan 2018-2027 and National Planning Framework are making, and as the sector gears up to deliver critical infrastructure over the coming years, just how prepared are we?

In our Member Focus, we learn what has fuelled the success of leading civil engineering contractor Roadbridge over its 50-year history, and our Project Feature outlines how Bennett Construction delivered an ultra-modern education hub in Dublin city centre for the Royal College of Surgeons in Ireland.

In Industry Analysis, Jeanette Mair assesses the latest housing output figures from the Central Statistics Office; Scott Delaney of Construction Information Services outlines which civils projects will be rolled out in the coming 24 months; and Larry Fenelon of Leman Solicitors explains how subcontractors can avail of the provisions set out in the Construction Contracts Act 2013. In our Safety

Focus, Brian Holmes of Bam Ireland outlines how the company has addressed the risks presented by respirable crystalline silica (RCS) dust.

Elsewhere in this issue, we bring you all the latest CIF News, Events and Industry News. **C**



Robbie Cousins
Editor

YOUR CONSTRUCTION INDUSTRY FEDERATION TEAM - WWW.CIF.IE

Foundation Media Ltd
Sandwith House
52-54 Sandwith Street
Lower
Dublin 2
P: +353 1 677 3157

Editor:
Robbie Cousins
Email: robbie@foundationmedia.ie

Commercial Manager:
Joe Connolly
Email: joe@foundationmedia.ie

Editorial Design:
Joanne Birmingham

Printing:
W.G. Baird

Publisher
Foundation Media Ltd

Construction House,
Canal Road, Dublin 6.
D06 C6T2
Tel: 01 4066000
Fax: 01 4966953
Email: info@cif.ie
Twitter: @CIF_Ireland



Construction House,
8 Montpellier Terrace,
The Crescent, Galway. H91 AC96
Tel: 091 502680 Fax: 091 584575
Email: cifgalway@cif.ie

Construction House,
4 Eastgate Avenue,
Little Island, Cork. T45 YR13
Tel: 021 4351410 Fax: 021 4351416
Email: cifcork@cif.ie

PRESIDENT: Dominic Doheny
DIRECTOR GENERAL: Tom Parlon
CHIEF OPERATIONS OFFICER:
George Hennessy

DIRECTOR / EXECUTIVE TEAM
HOUSING & PLANNING:
Hubert Fitzpatrick, Lorraine Hosty

ECONOMIC AND POLICY RESEARCH:

Jeanette Mair

MAIN CONTRACTING:

Martin Lang, Alison Irving

SPECIALIST CONTRACTING:

Sean Downey, Gillian Ross

INDUSTRIAL RELATIONS &

EMPLOYMENT SERVICES:

Jean Winters, Cheryl Treanor

EASTERN REGION:

Hubert Fitzpatrick, James Benson

SOUTHERN REGION:

Conor O'Connell, Ronan O'Brien

WESTERN / MIDLAND REGION:

Justin Molloy

SAFETY & TRAINING:

Dermot Carey, John Egan

LEARNING & DEVELOPMENT:

Robert Butler

MEMBERSHIP:

Renee McManus, Maude Foley

Bernardine Walsh

FINANCE / ACCOUNTS:

Gabriel MacGrath

COMMUNICATIONS:

Shane Dempsey, Joanna Kiernan

ICT SERVICES:

Denis Cadogan, Paul Brady

CIRI - www.ciri.ie

CIRI: Lorraine Hosty

CIRI CPD OFFICE: Robert Butler

AFFINITY SCHEMES

Safe T Cert Dermot Carey

Affinity Cover Conor O'Connell,

Justin Molloy, Gillian Heffernan

CQAI Robert Butler

Economic and Policy Research

Executive Jeanette Mair

Magnet Renee McManus

CERS: Frances McNally

Tel: 01- 407 1434

Email: info@cers.ie

MILESTONE ADVISORY:

Susan O'Mara

Tel: 01- 406 8021

Email: info@milestoneadvisory.ie

CWPS: Martin Bradley

Tel: 01- 406 8025

Email: info@cwps.ie

ESSENTIAL LEARNING SERIES

ROADSHOW



**Aviva Stadium
Dublin
September 25th 2018**

**Fota Island Resort
Cork
October 17th 2018**

Seminar Series

- Ready Mix Concrete
- Aggregates
- Masonry Blocks
- Rendering & Plastering Mortars
- Bituminous Materials
- SUDS





15

BUILDING
THE
REGIONS



21



26

CONSTRUCTION

CONTENTS

JULY/AUGUST 2018

5 CIF NEWS

The latest news and views from CIF

COVER STORY

15 BUILDING THE REGIONS

Growing signs of a pick-up in construction activity outside of Dublin.

PROJECT FEATURE

19 ROYAL COLLEGE OF SURGEONS

Bennett Construction delivers an ultra-modern educational hub.

CATEGORY FOCUS

21 WHAT THE FUTURE HOLDS FOR CIVIL ENGINEERING

The civil engineering sector outlook is positive, but key issues need to be addressed.

24 ACCELERATION OF NDP CRITICAL TO SOLVING HOUSING CRISIS

Expert opinion from Conor Gunn, EY Ireland

MEMBER FOCUS

26 POWERED BY OUR PEOPLE

Profile of civilengineering contractor Roadbridge.

INDUSTRY ANALYSIS

28 DEFUSING THE PENSIONS TIME BOMB

Susan O'Mara explains the relationship between the housing crisis and pensions

29 CIS UPDATE — Civils Project Activity in Ireland in 2018

31 #BUILDINGEQUALITY —

Mercury Engineering rising to the diversity challenge.

35 IRISH WATER MINIMISING ON-SITE RISK

37 CONSTRUCTION CONTRACTS ACT 2013 — What subcontractors need to know.

39 DUBLIN DOCKLANDS CONTRACTORS SUPPORT LOCAL SCHEME DESIGNED TO MEET RECRUITMENT NEEDS

42 cifjobs.ie — Unlimited Free Access to International Recruitment Market.

45 CIF VIEW — CIF forecasts 19,000 new house completions in 2018.

CORPORATE PARTNER FOCUS

47 SOFTWARE SUPPORT GROUP —

Innovative Digital Solutions for Construction Industry.

SAFETY FOCUS

49 ELIMINATING THE RISKS CREATED BY RESPIRABLE CRYSTALLINE SILICA DUST

EVENTS

51 MINISTER CONGRATULATES CIF CONTRACTORS ON THEIR SUCCESS

52 CONSTRUCTION TOP 50 CIF CONTRACTORS

55 CIF HONOURS CARPENTER PAUL FOGARTY AT HIS 100TH BIRTHDAY CELEBRATION

INDUSTRY NEWS

59 NEWS OF DEVELOPMENTS FROM THE WIDER INDUSTRY

DIARY

63 DATES FOR YOUR DIARY

Don't miss a thing

TRAINING

64 TRAINING

A look at the CIF training schedule



19



AffinityCover

Construction Insurance

Range of Insurance Products available:

COMBINED LIABILITY

Bespoke policy wordings, with Lloyds and other A Rated Insurers



CONTRACTORS ALL RISKS

Contract Works, Plant, Equipment, etc



CONSTRUCTION PLANT AND MACHINERY INSURANCE

1) Third Party R.T.A. cover, 2) Accidental damage, 3) Inspection for all construction Plant/Machinery



PROFESSIONAL INDEMNITY

Scheme exclusive to all CIRI members to comply with new Building regulations.



MOTOR FLEET

Motor Insurance Agreement with various insurers to provide discounted rates for members



AffinityCover is designed to be purchased through your insurance broker.
For further information please contact your insurance broker or visit www.affinitycover.ie

A team of professionals who understand the special needs
of the construction market



Affinity Cover is arranged exclusively for members of the Construction Industry Federation and also available to CIRI members by Capital IM with various international insurers.
Arachas Corporate Brokers limited trading as Arachas, Capital IM is regulated by the Central Bank of Ireland.

CIF NEWS

BUDGET IS A HUGE OPPORTUNITY TO SOLVE HOUSING AND INFRASTRUCTURE CRISES

A message from CIF Director General, Tom Parlon

Budget discussions are well under way. Over the summer, the CIF has been shaping its budget submission with a view to removing some of the blockages in the delivery of construction activity at a local level, particularly in the regions. In this submission, we are also calling on Government to work with the CIF to chart a path for the future growth of the construction industry.

The recommendations fall under the headings: People, Infrastructure and Housing.

Under the 'People' heading, we are calling on the Government to support research to assess the existing knowledge gaps and address current and future skills training in the construction industry in Ireland. Paramount will be their support for the industry's awareness campaign to attract young people to work in the construction industry.

One of the key areas we're focusing on is rebuilding the apprenticeship model. Apprentice numbers are too low to sustain the industry and we need to double the level of new registrations up to 2020. Recent discussions with Solas have been promising and it's likely that the shared apprenticeship system is being considered for a larger roll-out after a successful pilot in the south-east.

Finally, in this area, we're looking to Government to introduce a research fund to help support construction research so that innovations can spread across the supply chain and improve the industry's innovative capacity.

In the 'Infrastructure' section, the key takeaway focusses on improving public sector procurement practices. As an extension of the CIF's cost recovery campaign, the implementation of the OGP *Medium Term Strategy for Construction* recommendations is to the fore. Delivering procurement mechanisms that support a wide range of contractors and SME's



CIF Director General Tom Parlon

“ THE GOVERNMENT MUST REPLACE THE ‘LOWEST PRICE’ AWARD CRITERIA WITH A COLLABORATIVE MODEL ” ”

and deliver value for money projects for the State. The Government must replace the 'lowest price' award criteria with a collaborative model offering improved profits (+1%) in return for desired delivery

outcomes in HSEQ and programme certainty.

In addition, the budget submission reflects the ongoing work we've been doing with the Department of Finance in ensuring the investment in infrastructure can be accessible and up to date to enable contractors to plan forward more effectively.

In 'Housing', the CIF is adamant that the Help to Buy incentive scheme is extended beyond the 31st December 2019 to retain the added certainty it provides in the residential construction industry.

It's also essential that Government makes available an enhanced provision to local authorities for roll out of the *Rebuilding Ireland Home Loan Scheme*. In addition, the House Building Finance Ireland body, when established, should be empowered to lend to companies granted license agreements by Government for the development of State lands.

Finally, the CIF is calling for the reinstatement of the requirement for full BCAR compliance for all single unit housing projects which require a Commencement Notice under BCAR. This will level the playing-field for CIF members.

Over the past three to four years, the CIF has successfully influenced national policies and this has been instrumental in securing €116bn in the National Development Plan, a strong increase in housing output and the objectives of the National Planning Framework.

Within the National Planning Framework, there are a number of funds to stimulate development across the country. These funds can be accessed by local authorities, in conjunction with industry and local groups so what's key now is that the Government, local authorities and regulatory bodies are adequately resourced and empowered to engage with industry to facilitate the essential construction activity our society and economy requires. **C**



THE CONSTRUCTION INDUSTRY FEDERATION **Annual Conference 2018** October 2 | Croke Park

Constructing Ireland 2040:
*How the industry will shape
communities, careers and
competitiveness in the next 25 years*



Tickets from just €125 + vat

The Sunday
Business Post

iQuest

TOPCON

EY

mace

Kingspan

PHILIPLEE

www.cifconference.ie

BARRIERS DETERRING IRISH EMIGRANTS WITH CONSTRUCTION EXPERTISE FROM RETURNING HOME

The CIF has identified a number of barriers deterring Irish emigrants with construction expertise from returning to Ireland. Since 2016, the CIF has highlighted a potential shortage of over 100,000 construction workers up to 2020 and is calling on Government and State Agencies such as Solas to recognise qualifications gained overseas by those in the diaspora upon their return to Ireland.

“The CIF has been highlighting the difficulties faced by our returning workers as far back as 2012,” says Dermot Carey, Director, Safety & Training, CIF. “Our members are reporting huge difficulties in attracting and onboarding returning emigrants into their companies because the qualifications they have gained overseas are not recognised by Irish authorities. Over 100,000 construction workers emigrated during the recession to countries such as Australia, Canada, the US, New Zealand and Dubai. Qualifications gained in these jurisdictions over the last decade are not recognised



Dermot Carey, Director, Safety & Training, CIF

here in Ireland. We are urgently calling on the Government to address this anomaly.”

Hundreds of skilled workers, with an array of construction licences, certificates

and expertise from abroad are coming home to find they must complete very similar courses here to have their qualifications recognised.

“We need a fast-track and clear route for returnees,” Dermot Carey adds, “otherwise they simply will not return here. At a time, when wages in the industry are increasing, making a return to Ireland more attractive to the diaspora, and demand for skilled construction workers is very strong, Government inaction in this area is problematic.”

The CIF has repeatedly flagged the urgency of attracting new employees into the industry, as well as encouraging those who may have left to return to work in the Irish industry. In 2016, EY/DKM consultants and SOLAS predicted that the industry would need 112,000 additional employees up to 2020 to meet the demands of Government strategies in housing and infrastructure. Since then the ESRI's estimate of the level of housing output required has increased by 30% to 35,000 new houses per year. **C**

TRANSPORT INFRASTRUCTURE IRELAND CEO MEETS WITH CECA COMMITTEE

Michael Nolan, CEO, Transport Infrastructure Ireland (TII), recently presented a National Development Plan (NDP) update to the CECA at a meeting in CIF headquarters, Dublin. His presentation addressed a number of questions that members had about procurement and delivery of key elements of the NDP.

“We were delighted to welcome Michael Nolan to CIF,” said Colin Cleary, outgoing CECA President. “We took the opportunity to raise NDP areas of concern for CECA members. We look forward to continuing to work with TII in a sustainable way in delivering the ambitious goals set out in the plan.” **C**



Martin Lang, Director, Main Contracting, CIF; Michael Nolan, CEO, Transport Infrastructure Ireland and Colin Cleary, outgoing President, CECA.

CIF AND AN GARDA SIOCHÁNA JOIN FORCES TO COMBAT MACHINE AND TOOL THEFT

'#secureitkeepit' campaign highlights the importance of construction equipment and site security across the country.



Pictured at the #secureitkeepit Campaign launch in Kinsale, Co Cork (L - r): Conor O'Connell, Regional Director, Southern Region, CIF; Donal Cahalane, Chairperson, Cork Branch CIF; Tom Parlon, Director General, CIF; Supt Con Cadogan, An Garda Síochána; Sgt James O'Donovan, Schull; Sgt Ian O'Callaghan, Crime Prevention Officer, Bandon; and Mike Varian, Health, Safety & Quality Manager, Cumnor Construction.

CIF and An Garda Síochána are taking a proactive role in crime prevention in the construction industry, which has historically been targeted by criminals. Building sites are by nature easy targets for criminals due to the types of materials, tools and machinery on site.

Figures show there has been a rise of approximately 25% in construction crime compared to this time last year in the southern region. This can involve thefts from vehicles, burglary, unauthorised taking of vehicles, criminal damage and trespassing.

The main objective of the '#secureitkeepit' campaign is to create and maintain awareness within the industry and among the general public as to the importance of site security, and the security of plant machinery, construction equipment and materials.

"Every year we encounter construction sites being targeted," says Sgt Ian O'Callaghan, Crime Prevention Officer for the West Cork Division. "In the southern region alone, we have had 131 construction crime incidents reported to Gardaí to date in 2018. We have a few simple things that can increase security on-site and prevent these crimes from happening."

Sgt O'Callaghan advises that the most important thing for anyone who owns tools and equipment is to keep them secure.

"If possible, put some type of identifying mark on them," he advises. "Take a photo and email it back to yourself so you have it forever. Every year, An Garda Síochána recover hundreds of thousands of euros worth of machinery and tools, most of which goes unclaimed."

Tom Parlon, Director General, CIF, says that with the construction industry in recovery mode and over 50,000 additional workers joining the industry since 2014, it's vital that members are smart about protecting their tools.

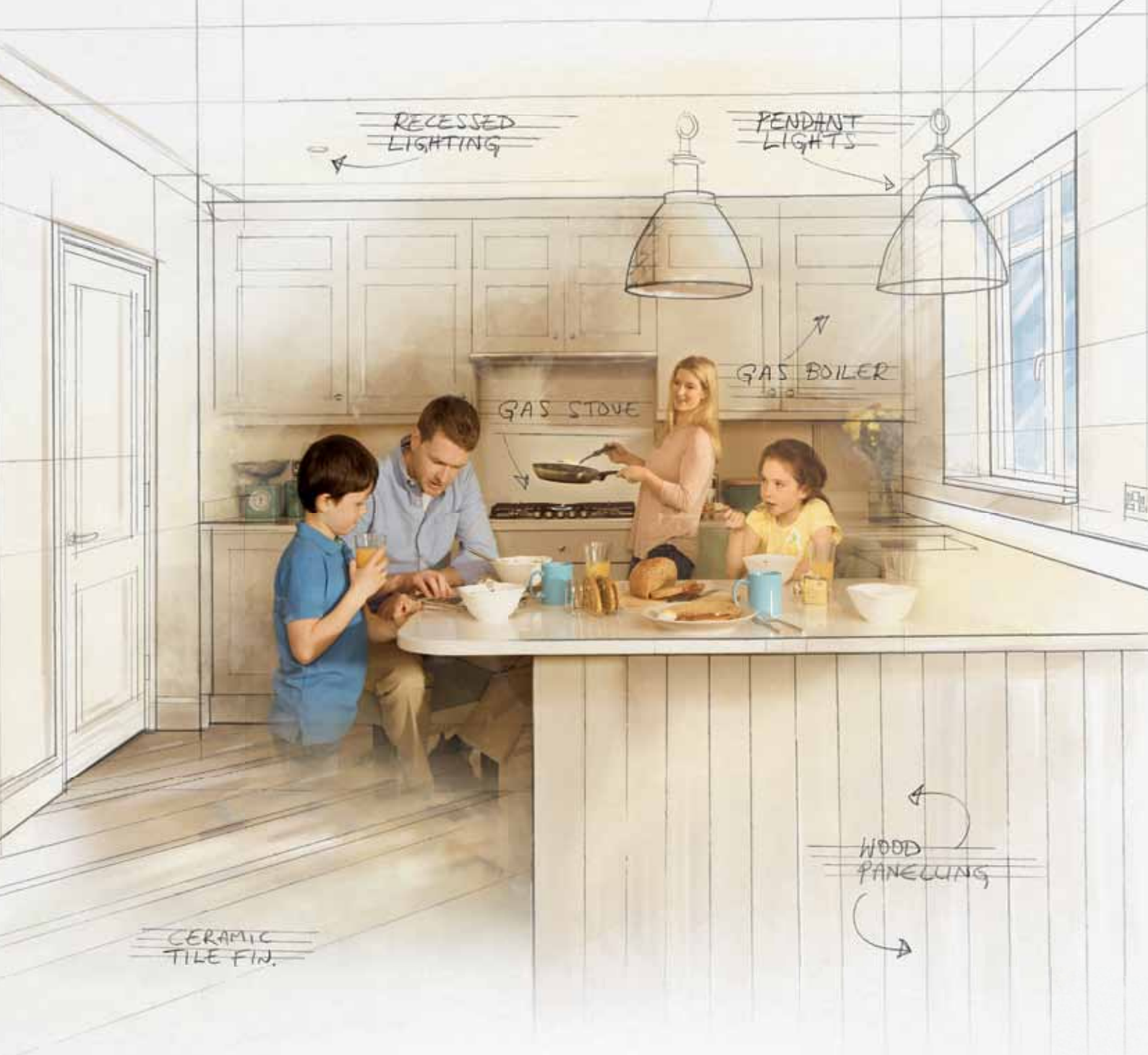
"A lot of tool theft is opportunistic, with criminals looking for a weak link in site or vehicle security. Taking a few simple steps can ensure that your tools are not targeted."

Some recent examples of thefts at constructions sites include:

- €30,000 worth of materials/equipment from a site in Limerick
- €22,000 worth of tools from a van parked outside a house in Limerick
- A €15,000 excavator from a site in Cork
- €15,000 worth of tools from a van left on-site in Limerick
- €12,000 of scaffolding from a site in Limerick
- €5,000 worth of copper cable from a site in Kerry
- A €5,000 rock breaker from a site in Cork
- A €4,000 generator from a site in Cork
- A €4,000 digger stripped of parts on a site in Cork. **C**

SOME SIMPLE TIPS TO HELP KEEP YOUR SITE MORE SECURE:

- Set up CCTV if you are going to be on site for a prolonged period
- Good security lighting
- Fences or hoardings are effective and should be used whenever possible
- Keep the number of gates to site entrance to a minimum
- Install localised temporary security alarms
- Control access to the site. Visitors must sign in and vehicle registration numbers be given
- Cash should not be kept on site when possible
- Machinery should be left in a well-lit part of the site with the keys removed
- Install security locks and ground fixings for extra security
- Keep a record of engine numbers, chassis numbers, vehicle ID numbers, etc
- Store tools in a secure area
- Photograph and mark all tools with a unique identification number and keep a record of it
- Report all thefts and suspicious activity on sites to An Garda Síochána



Build with their plans in mind. Make a house a home.

Connect to natural gas and transform your build into a home with all of the comforts desired by today's buyer. Achieve an 'A' BER rating with natural gas.

Always ask for gas

1850 504 055

newhousing@gasnetworks.ie



**Gas
Networks
Ireland**

GET INVOLVED IN CIF CONSTRUCTION SAFETY WEEK 2018

CIF Construction Safety Week 2018 runs from the 22nd to 26th October, and architect and tv presenter Dermot Bannon will front the campaign.

During 2017, there were a total of five fatalities within the construction sector compared to nine fatalities in 2016. All 2017 fatalities involved small contractors or self-employed construction workers. There were 787 non-fatal incidents in the construction sector in 2017.

This year's Construction Safety Week theme is 'Better Safety for Smaller Contractors' and architect and television presenter Dermot Bannon will front the campaign.

Last year's hugely successful campaign was embraced by members across the country according to Dermot Carey, Director, Safety & Training, CIF, as more sites than any previous year organised activities to promote greater safety awareness.

"CIF was delighted with the level of engagement with last year's campaign," Dermot Carey says. "Contractors and workers across the country embraced the programme positively and were extremely proactive throughout the week, using the platform to promote construction safety awareness on site, as well as overall general mental health and wellbeing.

"We would like an even greater take up this year and ask any members planning activities to register on the Construction Safety Week webpage as soon as possible, so they can access the materials, ideas and assistance available to them in planning their events."

Like previous years, the programme will have a daily theme, around which activities can be organised. This year the daily themes are:

- Monday: Work at Height
- Tuesday: Mental Health and Wellbeing
- Wednesday: - Electricity and Utilities
- Thursday: Hazardous Substances
- Friday: Managing Vehicles

Construction Safety Week 2017 saw a huge increase in engagement across all social media channels.

The total reach of the 2017 Construction Safety Week campaign across all CIF



CIF Executive launch Construction Safety Week 2017.



Dermot Carey, Director, Safety & Training, CIF, promoting the 2017 campaign by talking to media.

social media channels exceeded 4 million according to online media analysts Olytico.

Further reach was also achieved during the week via the CIF website (26,179) and CIF newsletters (12,035). To maximise reach on social media this year, use the

hashtag #cifsafety18 on all platforms including Facebook, Twitter, LinkedIn and Instagram. **C**

Members can register for this year's campaign and find suggested activities by visiting <https://cif.ie/safety-week>

DES MULCAIR ELECTED CECA PRESIDENT



Colin Cleary, outgoing President, CECA; Des Mulcair, incoming President, CECA and Martin Lang, Director, Main Contracting, CIF.

The Annual General Meeting of the Civil Engineering Contractors Association (CECA) took place on Monday 18th June 2018 at Construction House, Dublin.

At the AGM, Des Mulcair, Director, Roadbridge, was elected President of the Association, taking over from Colin Cleary, John Paul Construction Ltd, who has held the post since 2016. Colin Cleary welcomed Des Mulcair to the position and wished him the best of luck over the coming two years as President.

Des Mulcair thanked Colin Cleary for his commitment and work on behalf of members over the past two years and outlined

some of the issues he plans to address during his tenure.

"I am delighted and honoured to be elected as President of the CECA," said Des Mulcair. "I look forward to working with stakeholders to address key issues such as procurement processes and other issues that will impact on our members' capacity to deliver infrastructural elements of the National Development Plan."

Des Mulcair is a long-standing member of the Executive Committee of the CECA and also serves as a representative on the CIF's Taxation, Investment, Finance and Public Spending subcommittee. **C**

21 CONSTRUCTION-RELATED COURSES IN SPRINGBOARD 2018 OFFERING

The Government has launched Springboard+ 2018, offering 8,088 places on 245 courses leading to awards at certificate, degree and post-graduate level. Following lobbying by CIF, there are now 21 construction-related courses to choose from for autumn 2018 entry.

The majority of courses are part-time for a maximum period of 12 months.

2018 courses are now available free for employed people on NFQ Level 6 courses or heavily subsidised (by 90%) for NFQ level 7-9, with participants required to contribute just 10% of the fee.

Available construction courses include:

- Certificate in Building Information Modelling (BIM) – with Revit MEP (NFQ 6), Tralee Institute of Technology. Closing date for applications: 30th August 2018. Delivery method: Online.
- Certificate in Quality Assurance (NFQ 6), Institute of Technology, Sligo. Closing date for applications: 31st August 2018. Delivery method: Online.
- Certificate in Near Zero Energy Buildings (NFQ 6), Limerick Institute of Technology. Closing date for applications: 17th September 2018. Delivery method: Mixed.
- Building Information Modelling (BIM) – with Revit MEP (NFQ 6), Limerick Institute of Technology. Closing date

for applications: 18th September 2018. Delivery method: Classroom – Evening

- Postgraduate Certificate in BIM Technologies (NFQ 9), Dublin Institute of Technology. Closing date for applications: September 2018. Delivery method: Mixed, Classroom – Evening.
- Higher Diploma in Engineering in Building Information Modelling (BIM) (NFQ 8), Galway-Mayo Institute of Technology. Closing date for applications: 28th December 2018. Delivery method: Online. **C**

A full list of courses can be found at www.springboardcourses.ie

ETCI ANNOUNCES €140,000 EMPLOYEE TRAINING AND EDUCATION BURSARY

Members of the Electro-Technical Council of Ireland (ETCI) and the Electrical Industries Federation of Ireland (EIFI) met recently to mark the establishment of a new €140,000 ETCI bursary. The bursary is intended to support the development and education of future electrical industry employees throughout the sector.

"This bursary will establish a great legacy for the ETCI," says Sean Downey, President, EIFI, who received the cheque from Ger Buckley, Chairman, ETCI. "For over 40 years the ETCI has on a voluntary basis helped to develop technical standards for the electrical sector. We now hope that with the passing of electro-technical standards over to NSAI's ETC Committee we will have continued support and leadership in this critically important area. The bursary will help to provide support for future electro-technical, craft and industry employees and help to generate greater technical excellence across the sector."

The ETCI bursary is a one-off contribution that will be administered as

Back row (L-r): Kevin O'Reilly, EMDA; Gavin Edwards, LAI; Chris Lundy, AEI; John McAuley, ETCI; Seamus Elmore, EIFI; Noel Simpson, AEW; Pat Tully, President, EMDA; James Whan, EMDA/IEBA; Geoff Peat, IEBA; Cel O'Reilly, IEBA; and Neil Van Lonkhyuzen, EMDA. Front row (L-r): Ger Buckley, ETCI; Sean Downey, President, EIFI; Adrian Harney, Chairman, ETCI; Jim Rice, EIFI; and Tim Ferris, ECA.



the ETCI Bursary by the EIFI. The EIFI comprises the Electrical Contractors Association (ECA), the Association of Electrical Contractors Ireland (AECI), the National Electrical Contractors Ireland

(NECI), the Electrical Manufacturers and Distributors Association of Ireland (EMDA), the Association of Electrical Wholesalers (AEW) and the Lighting Association of Ireland (LAI). **C**

HSA 'KEEP SAFE' SCHOOLS PROGRAMME CELEBRATES 10 YEARS ON THE ROAD

The 'Keep Safe' programme, coordinated by the Health & Safety Authority (HSA), is based on the highly successful Northern Ireland 'Bee Safe programme'. A Bee Safe event brings together primary school children and various state agencies in Northern Ireland for the purpose of promoting safety and community awareness.

Since 2008, the HSA has organised six 'Keep Safe' events nationwide every year. To date in 2018, events have been held in Letterkenny, Co Donegal; Rathcoole, Co Dublin; Ballina, Co Mayo and Nenagh, Co Tipperary. The remaining two events will take place in Mallow, Co Cork, in mid-October and Wexford Town in mid-November.

At each Keep Safe event, a range of State agencies and regional organisations come together to deliver an interactive safety programme directed at fifth and sixth class pupils. The aim is to promote safety and community awareness by involving children in a series of interactive scenarios with a strong safety theme.

"CIF has been involved in the Keep Safe initiative since its beginning," says Dermot Carey, Director, Safety & Training, CIF. "It is an opportunity to raise awareness of the dangers posed by playing on construction sites. When we ask for volunteers we are



Students participating in a HSA CIF Keep Safe interactive presentation in Gort, Co Galway.

never found wanting. It is a perfect project to promote our 'Play Safe – Stay Safe' initiative." **C**



NEW MEMBERS

The Construction Industry Federation welcomes the following new members who, having met all the necessary criteria, have been approved for membership by the CIF Executive Body.

JF Building & Civil Engineering Contractors Ltd Clonlaheen Kilmaley Ennis Co Clare	A1 Tradesmen Ltd 40 Walkinstown Avenue Walkinstown Dublin 12	ABS Ashmore Building Services Ltd Ballybrittas Kildalkey Co Meath
Caraden Construction Ltd Kingsland Ballinora Waterfall Co Cork	GC Fitout Ltd 30 Pembroke Street Upper Dublin 2	LSK Construction Ltd Kyle Killea Templemore Co Tipperary
Mavco Building Services Ltd Unit E4 Brooklodge Business Park Glanmire Co Cork	Paul O'Reilly Builder Ltd 278 Harold Cross Road Dublin 6W	Roshca Cleanrooms Ltd 14 Glenmacoff Road Drumlea Omagh Co Tyrone
MELMC Construction Ltd 81 The Maples Lismonaghan Letterkenny Co Donegal	Solow General Building & Maintenance Ltd 7 Cushlawn Drive Killinarden Tallaght Dublin 24	
	Stephen O'Rourke & Sons Contractors Ltd Masonbrook Loughrea Co Galway	

NEW CORPORATE PARTNERS



The Construction Industry Federation welcomes the following new Corporate Partners:

RANDOX
TESTING SERVICES

Randex Testing Services
 34 Diamond Road
 Crumlin
 Co Antrim



Acheson + Glover
 64 Old Moy Road
 Dungannon
 Co. Tyrone



BONDS

Surety Bonds

Our team of experienced specialist Bond underwriters, based in Kill, Co. Kildare can manage your queries, quotes and paperwork, giving you more time to build your business.

So, for all of your Bond needs, whether in Ireland or the UK, please call us today on **(045) 886993** or email **irelandbonds@tmhcc.com**

Tokio Marine HCC is rated **AA- (Very Strong) by Standard & Poor's**, ensuring your clients have peace of mind and strong financial security.



TOKIO MARINE
HCC

- **Performance Bonds**
- **Advance Payment Bonds**
- **Bid Bonds**
- **PPP Bonds**
- **Maintenance Bonds**
- **Retention Bonds**

International Group tmhcc.com irelandbonds@tmhcc.com

Tokio Marine HCC - International Group is a trading name of HCC International Insurance Company plc, which is a member of the Tokio Marine HCC Group of Companies. HCC International Insurance Company plc is authorised by the Prudential Regulation Authority (PRA) and regulated by the Financial Conduct Authority (FCA) and the Prudential Regulation Authority and is also regulated by the Central Bank of Ireland for conduct of business rules. Registered in England and Wales No. 01575839 with registered office at 1 Aldgate, London, EC3N 1RE. The Irish Branch is registered in Ireland No.902629 with registered office at Summit House, Embassy Office Park, Kill, County Kildare.

A member of Tokio Marine Group of Companies



Most activity in the southern region is centred around Cork city and suburbs.

BUILDING THE REGIONS

With growing signs of a pick-up in construction activity outside of Dublin, **BARRY MCCALL** talks to the people on the ground to get the full picture.

Sean Lemass responded by saying “A rising tide lifts all boats” when some sectors complained they weren’t feeling the benefits of his government’s economic expansion programmes.

That seems to be the picture emerging when it comes to construction activity outside of Dublin. There are real signs of growth emerging in some areas, while others are still finding the going tough. Government capital expenditure has yet to recover from the 2008 collapse in the public finances, but the National Planning Framework (NPF) and National Development Plan (NDP), announced earlier this year, should see that particular situation addressed in the medium term at least.

SOUTHERN REGION

“Generally speaking, the construction outlook for the southern region is positive,” says Conor O’Connell, Regional Director, Southern Region, CIF. “But this depends on the sector and location. Currently, most activity is centred around Cork city

and suburbs and around the Ringaskiddy area. We also have the Port of Cork, which is a very significant civil engineering project. As well as the large projects, there are a good number of projects underway that are keeping small- and medium-sized contractors busy. Looking forward, we expect to see construction commence on some significant civil engineering projects such as the Dunkettle Interchange and the Macroom Bypass in 2019. These infrastructural projects will facilitate a significant number of follow-on construction projects. The outlook for

Cork city is very positive.”

The situation in the mid-west is not so healthy.

“Our members have reported a decline in construction activity in the mid-west region over the past 12 months,” continues Conor O’Connell. “We anticipate a slight upturn in activity in 2019 with projects like the Regeneron expansion in Limerick. Hopefully we will finally see the much-anticipated Opera Centre development in Limerick going for planning in 2019. It is also noticeable that there are a number of commercial projects proposed by State

Gaelscoil Mhic Ahmlaigh, Galway, one of Ireland's biggest Irish language national schools.





Conor O'Connell, Regional Director, Southern Region, CIF.

agencies for the city and surrounding region. Unfortunately, there has not been any significant private-sector-led commercial development in Limerick that has reached construction stage yet. But residential construction activity around Limerick is improving.

"The outlook in Kerry tends to vary with the time of year," he points out. "The winter period is traditionally busy with hotel refurbishments and so on. That's looking particularly bright this year."

The outlook is also mixed in the south-east.

"There are a number of civil engineering projects like the New Ross and Enniscorthy bypasses ongoing, along with industrial projects in Dungarvan and Waterford City," explains Conor O'Connell. "They have been keeping the industry moving along. But residential is still struggling to reach the viability threshold, however."

"The plans for Waterford's North Quays by the Fawaz Alhokair Group – a Saudi Arabian retail and hotel conglomerate – should attract further international investment."

Looking to the future he says the NPF is a very positive statement for the main urban centres in the region.

"The three main population centres of Cork, Limerick and Waterford have been earmarked for significant growth. It's very important to have a strategic plan. Even more significant will be the infrastructure planned under the NDP. We are looking forward to seeing that rolled out. But we need to get projects like the Adare Bypass, Macroom Bypass, Dunkettle Interchange, M20 and M28 to go to tender as soon as possible."

Conor O'Connell has some concerns regarding the public procurement system.

"It seems as if the public procurement process is lengthening not shortening. The NDP is not just about big projects. It's about schools, extensions to Garda stations, funding for social housing



Cormac Smith, President, MBCA.

projects throughout the country, etc. You have to ensure the procurement process is there to benefit all contractors and it is vital to get the projects in the NDP to construction stage. Without infrastructure the region cannot expand in the manner anticipated by the NPF."

Cormac Smith, Director, MMD Construction, and President of the Master Builders & Contractors Association (MBCA), shares Conor O'Connell's view.

"Cork is doing well at the moment and it has been earmarked for further significant growth up to 2040. There are many projects underway or about to commence, but we need to spread this to all of the regions. There really is not much happening outside Cork and Dublin, which results in many contractors travelling significant distances for work. With so many contractors chasing work, it still remains a very competitive environment with very tight margins on projects. This illustrates that the industry still has the capacity to expand."

Cormac Smith has high hopes for the NPF and the NDP.

"The NPF and the NDP combined is probably one of the most important strategic advancements to happen to the construction industry in the past 50 years. It gives us an indication of what the Government wants to achieve in terms of infrastructural development and where it wants the infrastructure delivered. Where the industry needs more clarity is around the timelines for the projects."

WESTERN AND MIDLANDS REGION

Justin Molloy, Regional Director, Western and Midlands Region, CIF, sees the NDP and NPF as important steps in the right direction as far as regional Ireland is concerned.

"There is a realisation that Dublin can't sustain development at the rate it's going," he says. "There is great development potential in the north west, western, and



Justin Molloy, Regional Director, Western and Midlands Region, CIF.

midland regions and the NPF is a step in the right direction. Sustainable regional development is what is required if we are to show our young people that there is a local economy here for them and they don't have to look elsewhere for work."

But more detail is required.

"The NDP needs a timeline for its delivery and a bit more definition about it. We need to know its priorities so we can plan for its delivery. The implementation of the NPF will pave the way for balanced regional development that will benefit the entire country, while at the same time taking the pressure off Dublin. If we had the infrastructure, then we could attract more FDI into the region. Ireland West Airport is a good example of this, it is a fully functioning international airport that has the potential to be a catalyst for economic development for the entire north-west region. If it had the necessary infrastructure, then it could be developed similar to the Shannon Duty Free Zone, and it would attract FDI and jobs to the region."

He employs an anatomical metaphor. "It's similar to the body," he explains.

"Civil engineering is the skeleton, and you build everything else, the muscle and vital organs and so on, around it. We need the basic infrastructure, but the work needs to be planned and sustainable. If you have the basic infrastructure in place, it will create the foundations for balanced regional development."

Growth is being seen in other areas.

"Things have improved," says Justin Molloy. "More housing is being planned, particularly in Galway city. There is going to be an increase in residential activity in Galway city, as well as some of the smaller urban centres in the region. We also have the GMT iHub innovation centre, and there is more work planned at NUIG. The university was great for the industry, even in the lean years. Also, University Hospital Galway has additional works planned."

In addition, the Government announced



Tara Flynn, Chairperson, CIF Galway Branch.

plans for a new hospital for Galway under the €115bn to €116bn *Project Ireland 2040* programme. The hospital will be one of three elective-only hospitals nationwide, specifically designed to tackle waiting lists. Also announced were a new ambulance base at Merlin Park, and an emergency department and oncology centre at University Hospital Galway.

"Local authorities and housing associations are coming on board with social housing," Justin Molloy adds. "We still have schools and commercial projects going ahead. JJ Rhatigan will be seeking planning permission for a €250m hotel and residential development on the Crown site in Galway city in 2019. But more peripheral parts of the region are finding it tough enough. Irish Water is carrying out upgrades to existing infrastructure, as well as investing in new projects. But, there is a lot of competition, and tender prices are still very low."

Tara Flynn, Chairperson, CIF Galway Branch, explains that many CIF members in the region are still finding conditions difficult.

"Things are still not great here," she says. "I have spoken to some of my members and they don't see much of a pick-up. While there is some residential and student accommodation being built, there are no significant projects coming on stream for next few months. The lack of tower cranes here in the west is obvious and this portrays the scarcity of work."

"Regionally, Ballinasloe Garda Station is currently undergoing major works to the value of €1.5m and this will be finished by the end of the year. Major works to the Athenry sewage treatment plant are also currently ongoing. However, a lot of our contractors have to look outside Galway for work."

Tara Flynn also points to problems with the public procurement system.

"Costs have gone up and we are now including services such as BIM, which further increase costs," she notes. "When



James Benson, Executive, Eastern Region, CIF.

you do win work there is no margin in it as prices are very tight. Procurement processes are becoming extremely difficult and they can exclude smaller but vastly experienced contractors. Something has to change, and soon."

Justin Molloy agrees that the procurement issue needs to be addressed. "Pre-qualification can be onerous and can often exclude smaller contractors from the tender process," he says. "When regional contractors secure work in their own region they will employ locally, buy locally, and their staff will spend locally. The economic advantages are clear. The CIF Procurement Tendering and Contractual Matters sub-committee has been doing a lot of work in this area to address the issue of SME participation in public procurement, the bundling of projects and the need to make further amendments to the public works construction contracts."

EASTERN REGION

James Benson, Executive, Eastern Region, CIF, sees green shoots starting to appear in some areas.

"It is widely recognised that provincial Ireland is moving in pockets, with further growth expected through the latter parts of 2018," he says. "Residential construction activity in the eastern region is expected to continue to grow when market values reach replacement costs in all locations. Regionally, where activity is occurring, developments are being built to test the market in phases anywhere in the range of 20 to 30 units at a time."

He adds that for longevity, a housebuilder needs to see more than replacement costs in any area.

"The Government's establishment of Home Building Finance Ireland (HBFI) will be embraced in the regions, and we look forward to it providing development finance for viable house building projects later in the year when full details become available."

He says that the regions would also



Michael Raggett, Chairperson, CIF Kilkenny-Carlow Branch.

benefit further from an extension of the 'Help to Buy' incentive scheme beyond the 31st December 2019 deadline.

"The scheme has been a major factor in bringing first-time buyers into the market and increasing the ability of housebuilders in the region to present viable developments to their funders. An extension of the scheme is vital to contribute to increasing activity levels while providing more certainty."

He believes that the NPF will impact positively on growth in the regions.

"The history of national spatial plans in Ireland could be considered in cases as somewhat missed opportunities. Without the introduction of the NPF, future development scenarios show cities like Cork, Limerick, Waterford and Galway growing, but not at the pace or scale required to function as realistic alternatives to Dublin. The potential of the NPF could see investment in areas of the region scarcely imagined in the past. The Capital Tracker will be a key indicator of the economic progress being made in all regions and will provide a dashboard of delivery for all the key projects in the various locations."

Michael Raggett, Chairperson, CIF Kilkenny-Carlow Branch, is cautious for the moment.

"Things are improving, but slowly," he says. "There isn't a dramatic shift in the regions, but a few things are starting to happen. We see a lot of people still travelling outside the region for work. There are a couple of jobs coming on to site in commercial construction. Kilkenny/Carlow is seeing a number of residential schemes coming up, and we will see a few more next year. It's becoming economically viable to build first-time buyer housing again."

"The general economy is picking up and that will eventually feed through to construction – the rising tide will lift our boat as well." **C**

AWARD WINNING CONTRACTOR

Commercial | Student Accommodation | Fit-Out | Retail | Educational | Data Centers | Industrial | Residential



76 Sir John Rogerson's Quay



Dorset Point Student Accommodation



RCSI, 26 York St



Fifty Seven East, London



Oisín House Student Accommodation



City Quay Office Development



**Irish Construction
Excellence Awards 2018
Winner**

CONTACT US



T: 044 9346000
F: 044 9346040



info@bennettconstruction.ie



www.bennettconstruction.ie



Forest Park, Mullingar,
Co. Westmeath.

BENNETT CONSTRUCTION DELIVERS ULTRA-MODERN EDUCATIONAL HUB

Bennett Construction's Royal College of Surgeons educational hub was chosen as the Public Choice for 'Building of the Year 2018' in the RIAI Irish Architectural Awards.

The new academic and educational hub for the Royal College of Surgeons Ireland at No 26 York Street, Dublin is a highly complex mix of spaces on a compact urban brownfield site, which includes advanced simulated environments for clinical and surgical training as well as a new library, auditorium and sports facility. The client brief for the redevelopment of the building called for the structure to be flexible and adaptable and constructed in materials of high quality.

MAIN CONTRACTOR

Bennett Construction Limited (BCL) has a strong track record in the delivery of projects in city centre locations and was appointed as the Assigned Builder and Project Supervisor for the Construction Stage (PSCS) on the development following a single stage tendering process. BCL then appointed a strong dedicated team to deliver the project. BCL is accredited to ISO 9001, 14001 and OHSAS 18001 and these operational systems were put in place to manage the project.

The project featured in an RTE documentary, 'Dermot Bannon & The Big Build', which was first broadcast in October 2017.

THE BUILDING

The gross floor area is approximately 12,000 sq m and was constructed primarily of an in-situ concrete frame with structural steel elements incorporated from basement minus four (B-4) to the fifth floor. The building comprises a state of the art surgical and clinical training suite containing a flexible wet lab, mock operating theatre, clinical training wards, standardised patients' rooms and task training rooms. A simulation centre is laid out over three floors of the 10-storey building, where



students have access to a surgical and training suite with clinical skills labs, the mock operating theatre and clinical training wards.

To meet the brief, the building included a 540-seat auditorium, a library spanning three floors with 500 study spaces, a sports hall and fitness suite. Construction started in 2014 and was completed in mid-2017. The site environs adjacent to St Stephens Green encountered traffic restrictions in terms of routes available and the management and coordination of over 300 workers on site during the peak. The main vehicular access to the site was via Cuffe Street – a mainly residential street. BCL utilised part of the existing car park as an accommodation and compound area. Part of the work scope included upgrades along both sides of York Street with phased path closures to accommodate the works. BCL used a dedicated logistical team to ensure that deliveries and removals were controlled, keeping local residents informed

of activities at all times.

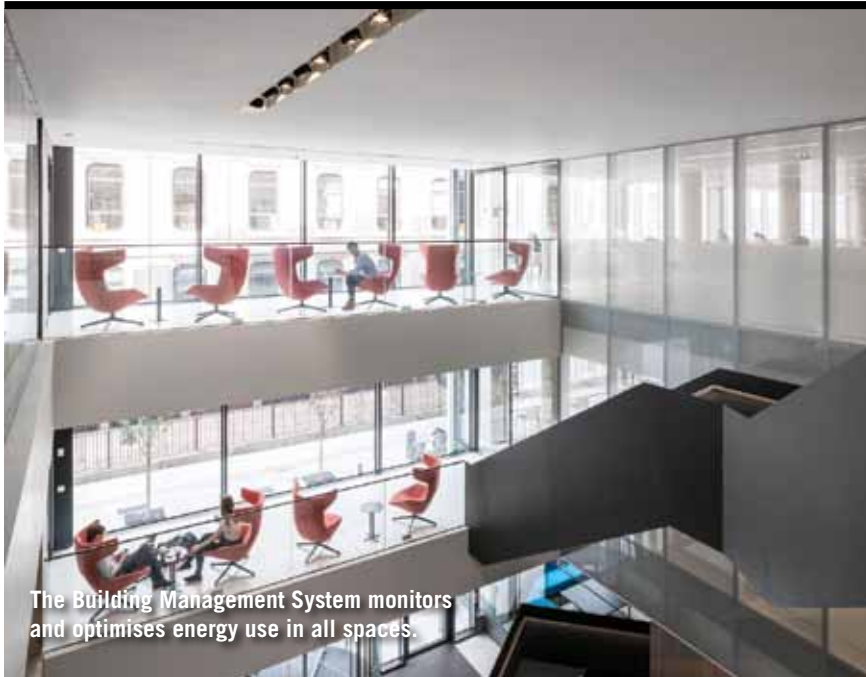
"There were many logistical challenges," says William McLaughlin, Project Manager, BCL. "It was a city centre site that's not designed for construction traffic, but our dedicated logistics manager kept things moving."

The original basement box footprint had sat idle for a number of years and was to form the basis of the new development. The basement was extended laterally by over 10 metres, and the existing intermediate floorplates propping the east wall were removed to facilitate reconfigured stacked, double-height spaces.

PILING & BASEMENT WORKS

BCL placed a 20-tonne mobile crane in the basement until such time as they could create a suitable base for the tower crane. The base of this crane was below the attenuation tank which was constructed below the basement -4 level. Full depth concrete secant piles were planned to

PROJECT FEATURE: ROYAL COLLEGE OF SURGEONS



the central facilities. The raking columns resulting from the design solution thus became architectural features.

FINISHES

External finishing is a mix of brick, curtain walling and brise soleil. Building fabric U-values exceeded Building Regulation, requirements. A pattern of ceramic fritting on the glass improves the shading coefficient of the glazing, reducing solar heat gain and hence air-conditioning load. A central Building Management System (BMS), with metering for all individual accommodation spaces to monitor and optimise energy use, was installed. On the south facing elevation the high-performance glazed façade incorporates an outer layer of perforated anodised aluminium panels, reducing glare in the tutorial and library staff areas.

"Given the range of design uses within the building, the finishes provided for a complex and varied palate of materials, evident from the sports environs, through the auditorium and into the clinical areas. In effect, there were a number of building types incorporated within the one building," says William McLaughlin.

Internal finishes comprise high-spec fit-out, including floor, wall and ceiling finishes. The building showcases exposed concrete in various finishes throughout. Terrazzo is common to circulation spaces, tying the floors together and drawing light deep into the plan.

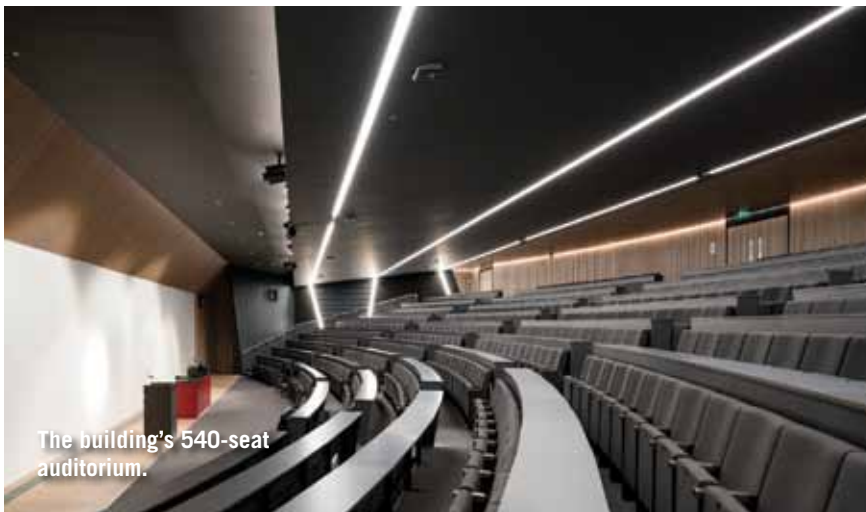
The services installations, including mechanical, electrical, sprinkler and lift installations, builders works, kitchen installation, built-in joinery, sanitary ware, tiered seating and a range of hard and soft landscaping, formed part of the turnkey services provided by BCL.

The building accommodates hugely advanced teaching technology – simulation, recording and playback – a new innovative curriculum. This technology is designed into the fabric of the building.

Due to the RCSI's international importance, the LEED method of assessment was chosen to provide a framework for the incorporation of sustainable design features into the project. The building has achieved a LEED GOLD certification.

AWARDS

Number 26 York Street has won a number of awards including 'Best Education/Healthcare Project' at the ICE Awards. It also won the 'Public Choice' category at the RIAI Irish Architecture Awards 2018 and the 'Building Category' at the Irish Concrete Awards 2018. **C**



the perimeter of the extension and were bored through the overburden and rock to approximately 1.5m below formation level.

Significant temporary works and careful sequencing with permanent works were required to construct the basement extension and alterations.

INNOVATIVE SOLUTIONS

There were a number of innovative solutions in the structural design of the building, particularly large span areas at basement levels. The auditorium spanned over the sports hall of approximately 18.5m. A structural BIM model was used for clash avoidance and to allow the construction team to understand the complete design with 3D visualisation. Having a full-size sports hall at -4 level with a 540-seat auditorium overhead presented design and construction challenges. The challenge was to devise a long-span structure to bridge this space and support vibration-sensitive accommodation above. The designed solution was one of steel and decking above

the auditorium, which needed to be placed before the upper concrete frame was in place. Considerable back propping was required to support the auditorium steel in its temporary state until the structure acted as a whole.

The strict planning limit on building and parapet height limited the floor depth available to accommodate both structure and extensive mechanical/electrical servicing to mixed-use spaces. A further complication was the projection of the basement box under the York Street footpath line and the façade overhanging by approximately 1.4m. This prohibited a direct line of vertical support for structural transfer of loads. The solution devised by the team was a storey-height funicular transfer structure, involving the interaction of ground floor, first floor and raking columns that would reduce superstructure span from 17m down to a more manageable 12.5m span. The resulting 2.25m side spans would be used for both service distribution and to provide a natural corridor space to



M17 M18 Gort to Tuam motorway completed in 2017 by the DirectRoute Consortium comprising Marguerite Fund, InfraRed Capital Partners, John Sisk & Son (Holdings) Limited, Lagan Construction Group, Roadbridge and Strabag SE.

WHAT THE FUTURE HOLDS FOR THE CIVIL ENGINEERING SECTOR

While the outlook is positive in the civil engineering sector, key issues remain to be addressed. **BARRY MCCALL** reports.

With the *National Development Plan 2018-2027* (NDP) setting out a pipeline of projects for the next nine years and beyond, civil engineering contractors are gearing up to roll out projects across the country. But, before that can happen, some crucial issues need to be addressed to ensure the successful delivery of these vital infrastructural works.

NATIONAL DEVELOPMENT PLAN

Des Mulcair, Director, Roadbridge, and President of the Civil Engineering Contractors Association (CECA), acknowledges that there have been some

significant improvements in the sector, but he says there is a way to go.

“The sector is still very challenging due to the lack of a significant pipeline of projects. Civil engineering companies have spent almost a decade in survival mode and are heavily reliant on the levels of investment that have been published in the recent NDP.”

Des Mulcair is confident that the outlook is promising, provided that all stakeholders deliver on their commitments.

“The industry will become stronger and more resilient. The key to this will be the approach to procurement, which will need to be rolled out sustainably.

“We will need to continually engage with Government and its procuring agencies to ensure best practice is used in terms of procurement methodology, risk transfer and, for example, the use of early contractor involvement where appropriate.”

Pat Lucey, Senior Vice President, CIF, and Regional Managing Director, Civils Ireland, John Sisk & Son, believes as things stand right now the civils sector is still in recession.

“The outlook is positive though,” he adds. “And from what we can see from the NDP, the sector should emerge from recession in 2019. This has been quite unusual. Our building colleagues



Des Mulcair, President, CECA, and Director, Roadbridge.



Pat Lucey, Senior Vice President, CIF, and Regional Managing Director, Civils Ireland, John Sisk & Son.

probably came out of recession in 2013 or thereabouts, and in previous cycles, it was not unusual for civils to follow a couple of years later.”

Pat Lucey believes that the extended lag has been due to the depth of the last recession.

“FDI kept contracting going to a certain extent and then the hedge funds came along and completed a lot of projects. This generated work for building contractors, while the civils sector remained in recession. The plans on the table are now akin to the plans that were there in the 1990s when the first NDP came out. There are great prospects now for 2020/21 for the civils sector.”

John Cradock, Managing Director, John Cradock Ltd, says that this Government plan envisages a lot of civil work activity in the future.

“It’s great to see the NDP in place, and it will bring work away from the east coast.”

The long lead-in to NDP projects is not unexpected, Pat Lucey says.

“When Paschal Donohoe was Minister for Transport he was very transparent and forthright about the fact that a lot of the plans would be backloaded. We always knew 2018 would be quiet, but we are starting to see the light at the end of the tunnel for 2019.”

Martin Lang, Director, Main Contracting, CIF, agrees.

“There are optimistic forecasts for the number of projects due to come onstream in the next few years and for the pipeline of projects into the future,” he says. “This is

very welcome, but we have heard it before. However, I do believe it this time.”

RISK

John G Murphy, Managing Director, Murphy International, describes the sector as being in a “mixed state”.

“The recession caused an incredible amount of damage and firms have had to go through the cycle that resulted from that,” he says. “Companies survive recession and then emerge into a new dawn. Many of them are borrowing now to fund projects. This is the riskiest time for a business. We have seen some go to the wall and that has a trickle-down effect on others in the industry and the supply chain. The whole industry ends up paying when one goes out of business.”

A little bit more clarity would help build more confidence.

“One thing we need is more visibility,” says Pat Lucey. “If you look at the track record of the civils sector, once we know the projects are coming we invest in the people and the equipment needed. We have a certain amount of visibility, but we could do with more.”

Transport Infrastructure Ireland (TII) will play a vital role in the coming years, according to Pat Lucey.

“TII has a certain number of ready-to-go projects on the shelf, and they are emptying those shelves at the moment,” he says. “They are getting the projects out, and that’s very welcome. They are also advertising for design teams for future work, and that’s very good to hear as well. TII is good at

this, but it hasn’t been made any easier with EU regulations making it more onerous to take projects through planning. This adds to the timeline. We have seen objections to projects that go all the way to the courts. You can never really be certain about them. Take Apple in Athenry for example.”

He notes that some newer public sector clients have yet to achieve the level of maturity of TII.

“Irish Water has inherited a portfolio of work full of challenges,” he points out. “It took a couple of years for the NRA to get going. Irish Water is going through the same learning curve. There are lots of good people in there, but it will take a little bit of time.”

PROCUREMENT

One issue which comes up time and again is the nature of the public works contracts which place all risk on the contractor. Public procurement processes which focus on lowest cost at the expense of other factors also give rise to problems.

“In the vast majority of projects carried out by the State the procurement model does not deliver the best value for money for the taxpayer,” says Martin Lang. “Public works contracts are commonly referred to as fixed price lump sum contracts. The contract is almost always awarded to the lowest price tender. This means little, or no account is taken of quality. It’s purely and simply the lowest price. Also, the contract is designed to make it virtually impossible for a contractor to claim entitlements because of the way risk is transferred. Risk should



John Cradock, Managing Director,
John Cradock Ltd.

rest with the party best able to manage it, and that is clearly the Government in this instance.”

FIXED PRICE CONTRACTS

The fixed price nature of the contracts exacerbates that risk.

“A fairly typical civils contract could be 36 months in duration,” Martin Lang continues. “I defy anybody to predict the likely cost of anything in three years’ time. All that risk is imposed on the contractor. Wage increases are not recoverable. Price increases for copper, steel, energy – none of these are recoverable. If contractors wish to engage in Public Sector work they find they have to take on unsustainable risks.”

Martin Lang is calling for a change in approach to the MEAT – Most Economically Advantageous Tender – model.

“If this was used, other factors such as quality and the total cost of the project over its whole life would be taken into account. It would allow the client to take a broader view of the tender process. It’s about an intelligent approach to awarding tenders. It is no good building a school if the roof is going to collapse in three years’ time. What about maintenance costs? There is a need to move to a more sophisticated procurement model.”

John Cradock agrees.

“The prospects are good for the sector, but contracts are an impediment. There are a number of issues with the contracts, and CIF has been arguing the case for years. If there is a dispute and it goes to arbitration, the contractor has to pay their own costs, win, lose or draw. That’s unfair. We have fixed price contracts, yet when the Sectoral Employment Order was issued the price could not be varied to take that into account. The contractor has to absorb costs and delays, which may have been caused by designers and other stakeholders. The



Martin Lang, Director, Main
Contracting, CIF.

risks are not spread fairly. It’s an adversarial instead of a collaborative relationship.”

John G Murphy sees some signs of change on the horizon.

“Government agencies like TII and Irish Water have come to realise that the way contracts are being let, with the risk all on the contractor’s side, is unsustainable,” he says. “No one would say that a sector of our economy like fisheries should operate at zero profit, but some seem to expect it of the construction industry. It is naïve to think you can bid for work at below cost and then wonder why it doesn’t work out. Also, it is futile to engage in arbitration; the contractor has to carry all their own costs regardless of the outcome.”

He points out that the way the tender process operates almost guarantees below-cost bidding.

“We are engineers, and we understand statistics and standard deviation,” explains John G Murphy. “Statistically, if you have 20 contractors bidding for a job, given normal variances, four of them are going to come in below cost. With all the risk on one side, that’s only going to end one way. Risk should be borne by the parties most able to bear it. Lowest price is definitely not good for contractors, but it most often is not the best solution for clients and is absolutely wrong for the economy.”

CAPACITY

Finally, there have been some concerns raised in relation to the capacity of the industry to deliver the volume of projects envisaged in the NDP.

“That’s interesting,” says Pat Lucey. “Back in 2001 when the NDP for 2001-2006 was launched the Government identified the capacity of the industry to deliver as an issue. One solution identified was to encourage foreign contractors to come in. The Government held seminars in countries like Germany, France and the UK to try



John G Murphy, Managing Director,
Murphy International.

to attract contractors. If you look at what happened subsequently, it was the Irish industry that delivered the investment in people and employment and equipment and made arrangements to bring in foreign partners where necessary. Irish industry will be able to do it. The key is to have visibility of the project pipeline. The industry has always put in the investment when it was needed. There is a need to refresh equipment at the moment, and the industry will do that if it has confidence in what’s coming. In 2001, there was a promise of a project tracker which would be online and be regularly updated. They are still talking about it.”

Des Mulcair says that the National Planning Framework and NDP will enable the civil engineering sector to return to vibrant activity.

“This was the hallmark of the successful delivery of significant infrastructural programmes in the past and hopefully will become a key feature over the coming decades in delivering a thriving economy which will be to the benefit of everyone,” he says.

“While capacity issues can be challenging, our sector has demonstrated its ability to respond to market demands robustly and comprehensively, which traditionally has been a feature of the delivery of infrastructure in the past. I have no doubt we will see a similar response with these welcome and ambitious plans.”

Martin Lang says there should be no concern about industry capacity.

“The only issue to consider is the capacity of the Government side. Do they have the capacity to deliver? Do they have the procurement processes and so on in place? Any time our industry has been asked to perform we’ve done it. We can expand and contract to meet the needs of the market. It’s only a market, it’s not complicated.” **C**

ACCELERATION OF NATIONAL DEVELOPMENT PLAN CRITICAL TO SOLVING HOUSING CRISIS

CONOR GUNN, EY Ireland, explains why timely delivery of core civil infrastructure is essential to the successful delivery of key components of the National Development Plan.

One of the most socially harmful and visible manifestations of Ireland's infrastructure deficit is the housing crisis. Specifically, the challenge of producing sufficient housing supply that is commercially viable yet available at affordable prices. This will remain a key challenge for Ireland over the next five to 10 years, but it can be addressed if investment in core civil infrastructure is delivered within the timeframes envisaged in the Ireland 2040 plans.

As Ireland's economy continues to outperform its European peers, with GDP growth of 4.9% forecast in 2018, full employment within reach, growing tax revenues and visible capacity constraints, the case for significant and sustained infrastructure investment is clear.

The Government's plan to address Ireland's infrastructure requirements is well-articulated in the *National Development Plan 2018-2027* (NDP) and the National Planning Framework (NPF) – *Ireland 2040 Our Plan*, as well as *Rebuilding Ireland* which focuses on the provision of housing.

However, these plans are not mutually exclusive and Rebuilding Ireland's success is dependent on delivering the NDP within the timeframes envisaged. Without investment in core infrastructure there will be insufficient economically viable land available for Ireland's medium- and long-term housing needs.

CONSTRAINED LAND SUPPLY

There are several studies into what drives the cost of providing housing but the single largest and most volatile element is the cost of land, which can be 20%+ of the average house price. Furthermore, land cost can increase rapidly and feed into house price inflation as it is based on future price expectations rather than underlying economic costs.

There is a view that land is a finite resource, but this is not the case in the context of infrastructure investment, a key purpose of which is the creation of economically viable land [for housing]. This is a core concept underpinning

Ireland 2040's investment strategies and a key measure of the plan's success will be if the investments in transport, water and wastewater, broadband infrastructure, and other services alleviate the constraints impacting Ireland's residential landbank.

One of the prizes for Ireland in the efficient delivery of the NDP will be the mitigation of land price volatility and affordability issues. Through the Government's planned infrastructure investment it is possible to increase land supply, thereby breaking the vicious cycle of house and land price increases. Viewed through this lens, the importance of the NDP's strategic investment priorities are clear, and include:

- Housing and sustainable urban development
- Water investment programme
- MetroLink, BusConnects, regional connectivity
- The National Broadband Plan
- Education, health and childcare

There are several Government initiatives specifically focused on increasing land supply, the most recent of which is the National Regeneration and Development Agency (NRDA), whose remit will be to develop State lands.

Other existing initiatives include:

- Major Urban Housing Development sites: The development of local authority-owned sites to boost land supply and stimulate the provision of public housing
- The Local Infrastructure Housing Activation Fund: Government funding to unlock land value and reduce house price pressures
- Enhanced leases: A financial initiative with the capacity to unlock lands for public housing

IN CONCLUSION

The effective implementation of the NDP is critical for housing supply, and to realise its full benefits it requires:

- Delivery agencies to continue to focus



Conor Gunn, Director, EY Government, Infrastructure and Economic Advisory Team.

on reducing delivery times in both (i) pre-procurement planning and (ii) procurement phases

- Funding to be provided to delivery agencies, local authorities and An Bord Pleanála to increase both their internal and external resources. These entities are at the coalface of bringing projects to market and it is critical they are adequately resourced to avoid bottlenecks.
- Civil and housing infrastructure to be delivered in tandem to remove capacity issues
- Mortgage borrowing restrictions, which provide an effective break between the credit and land markets, to be maintained. This is critical as the broader economic benefits of creating productive land can be lost if the broader economic benefits are stripped out through debt-driven speculative pricing. **C**

Conor Gunn is a Director in EY's Government, Infrastructure and Economic Advisory Team. EY's Government and Infrastructure Team is advising Government and private sector clients in the provision of core infrastructure, housing and real estate and is committed to facilitating the Ireland 2040 plan to futureproof Ireland's economy and competitiveness.



BRINGING STRUCTURES TO LIFE

Next generation temporary works solutions

Operating globally but structured to deliver locally, RMD Kwikform is one of the world's foremost providers of formwork, falsework and shoring, above & below ground.

Our engineering expertise and experience enables us to see solutions that many others would never consider. We can engage early in the process to design-out potential problems and design-in greater safety, performance and value.

Allied to class leading products that have benefitted from years of innovation & enhancement, substantial stock levels and advanced logistics, we are delivering next generation solutions now.

For advice, sales or hire we are ready to help you bring structures to life.

SALE & HIRE
+353 1 8302500

www.rmdkwikform.com



Bringing
structures
to life



The A737 Dalry Bypass, Scotland.

POWERED BY OUR PEOPLE

SEAN MURPHY discovers how Roadbridge throughout its 50-year history has remained to the fore of Irish civil engineering.

Roadbridge celebrated its 50th year in business in 2017. In that time, the Limerick headquartered civil engineering contractor has not only made its mark in Ireland, but has been in the vanguard of Irish civil engineering contractors that have taken on and delivered complex overseas turnkey projects for a growing list of international clients. It currently has operations in Ireland, United Kingdom, Norway, Qatar, and Oman.

Conor Gilligan, Managing Director, Roadbridge, attributes the company's success in recent years to its multi-talented staff and their ability to collaborate effectively with clients.

"We are powered by the people who work for us as well as our focus on collaborating with clients and providing a quality service and product that has genuine added value," he explains.



Galway Wind Park.

STAFF

Roadbridge employs over 700 people directly.

"Our directly employed personnel carry out the vast majority of project work," Conor Gilligan continues. "They are supported by an experienced, specialist supply chain with whom the company works collaboratively to deliver innovative

solutions and value for clients."

PROJECTS

In recent years, Roadbridge has been involved in the delivery of some of the most significant projects undertaken in Ireland, such as the Limerick Tunnel, Corrib Gas Terminal, Grangegorman DIT Campus and Galway Wind Park. It is currently working on Center Parcs Longford, Oweninny

Wind Farm in Mayo and the Vartry to Callowhill Water Scheme in Wicklow. It is also undertaking extensive works at Dublin Port, as part of the Alexandra Basin Redevelopment.

“We are looking forward to beginning work with Microsoft in Grangecastle, Dublin, and MSD in Swords during 2018, following on from successful projects at Facebook in Clonee, Co Meath, and MSD in Brinny, Co Cork,” says Conor Gilligan.

In the UK, Roadbridge’s current portfolio of projects includes the Gas to the West HD Pipeline in Northern Ireland, the East Anglia One Onshore Cabling project in Ipswich, Thirlmere Link Mains in Cumbria and the A737 Dalry Bypass in Scotland.

Further afield, its work has included the Doha Expressway (AlWakra Bypass) in Qatar, on behalf of Larson & Toubro; and the Kwe West Tailings Pond at Goro Mines in New Caledonia in the South Pacific, on behalf of Vale Inco.

“We take a team approach on all projects, focussing on value engineering and innovation in order to achieve best results for clients,” says Conor Gilligan.

HEALTH & SAFETY

Roadbridge’s commitment to Health & Safety has led to the development of its ‘Your Safe Path’ initiative, whereby they have listed the five critical safety rules that cannot be broken across its sites and offices. These critical rules are issued to all workers on site at induction in a wallet-sized card, and the workers also sign a charter to demonstrate their understanding and willingness to follow the rules.

“The charter, which is signed by every Roadbridge board member, is displayed on all sites,” continues Conor Gilligan. “The company worked in excess of 3 million manhours during 2017 and had an impressive Accident Frequency Rate (AFR) of 0.03, which compares very favourably with the industry average of 0.2.”



Kwe West Tailings Pond, Goro Mines, New Caledonia.

North Runway Construction Package 1 Project, Dublin Airport.



NEW TECHNOLOGY

Roadbridge has adopted new technology across its operations to improve performance continuously. Recent examples of this include:

- A move towards the use of electronic forms, which serve to reduce time wastage and paper usage, and speed up information transfer

- Centralised cloud-based project folder structures in place of traditional servers

- The use of sustainable building products

- The introduction of a BIM system across the entire organisation.

VALUE ENGINEERING

Value engineering exercises are undertaken across all projects, and a recent example involved the processing of on-site material, instead of importation of rock from outside a site footprint. This initiative removed up to 35,000 truck movements along public roads, which ultimately saved up to 1,055 tonnes of CO₂ production.

IN-HOUSE EXPERTISE

In-house expertise provided to clients by Roadbridge as a self-performing contractor include being able to offer their services such as ecological surveying, drone surveys, as well as directly employed engineering

personnel, meaning the company can offer a skill set that goes far beyond earthworks and contracting and spans the entire project life cycle.

CONSIDERATE CONSTRUCTORS

“Roadbridge has always believed in being a progressive company,” says Conor Gilligan. “During 2017, we were one of the first contractors to pilot the Considerate Constructors Scheme (CCS) on Irish projects, having been involved with the scheme in the UK for a number of years.”

The North Runway Construction Package Project, undertaken on behalf of daa at Dublin Airport became the first project in Ireland to win a Gold Award, at a CCS awards ceremony in London.

“The CCS aims to improve the image of the construction industry, and this fits very well with the Roadbridge ethos of being a collaborative company to deal with,” he continues. “The value that these initiatives add to any project is beyond measure. Construction by its very nature is disruptive, so if a project can be undertaken with as little impact on the public as possible, then it is successful.”

FUTURE OUTLOOK

Roadbridge’s future outlook is bright, with the company looking to expand its operations in new countries, such as Norway and Sweden, as well as continuing to provide a quality, value-adding service to customers and stakeholders.

A MODEL COMPANY

If further proof were needed of Roadbridge being a model company, then the final push would be the fact that the company is being celebrated at the Diecast Model and Diorama show in Limerick on 9th September next. The event will take place at the South Court Hotel in Limerick, and the Roadbridge presentation is the largest project on a single organisation undertaken by the show creators in its 50 years of existence. **C**

DEFUSING THE PENSIONS TIME BOMB

SUSAN O'MARA explains how the current housing and rental crisis is exacerbating the pensions time bomb.

What is the pensions time bomb? I hear you ask. Excluding public sector workers, who have close to full pension coverage, the private sector figure is only approximately 37% coverage. This means that nearly two-thirds of private sector workers are reliant on the State pension when they retire. Of those with a private pension, its adequacy to provide a meaningful income in retirement is another question.

"With this level of reliance on the State pension, it must be very well funded," I hear you exclaim.

No, it's not. We pay PRSI contributions, and the State promises to pay us a pension, to replace our income when we are no longer working. Currently, the full contributory State pension for an individual will be €12,651.60 per annum (€24,070 for a married couple). However, the State does not set aside money to meet this promise. They pay it from the exchequer (tax take) in the year it falls due.

WHAT IS WRONG WITH THIS?

Currently, about five people are working and paying tax for every person in receipt of the State pension – but a shift in the demographic means that by 2025 this is moving in the wrong direction, and by 2050 that could be about two people working for every retired person. This puts significant pressure on the State's finances. Of course, we have known this for some time, and an OECD report in 2012 highlighted this and recommended the implementation of a later State pension age and the establishment of a mandatory pension scheme for all workers.

The State pension age was indeed pushed out. The qualifying age is currently 66; it will increase to 67 years in 2021 and to 68 years in 2028.

The *Pension Roadmap*, published this year, outlines a new auto-enrolment pension system, with public consultation to begin Q2 2018. The Pension Roadmap outlines



Susan O'Mara

“ THERE ARE TOO MANY RELYING ON TOO LITTLE MONEY IN RETIREMENT. ”

that consideration is being given to an employee/employer matching contribution structure up to 6% of gross salary, with a State contribution representing one-third of employee contributions. This level of funding is likely to be very short of what is required in retirement.

Therefore, in summary, the pensions time bomb means there are too many people relying on too little money in retirement.

So how does this link to the housing crisis and, in particular, the rental sector?

With rent in Dublin averaging €1,875 per month, an individual renting in Dublin today and retiring on the State pension alone is already in a deficit of €9,848.40 before any other expenses, including food.

WHAT HAPPENS THEN?

If a married couple or two people sharing a two-bed apartment at an annual cost of €22,500, and with a combined State pension income €24,070, they are left with only €1,570 to live on for the year.

In February, RTE published a Daft.ie

report citing the cheapest place to rent in Ireland is Donegal, with an average rent of €599 per month; a retired individual might fare better financially there, having a monthly surplus of €455. Except for the fact that it is the cities that are most densely populated and with the highest rents. According to Daft.ie, Q4 2017 saw average monthly rents as follows: Dublin €1,822; Cork €1,180; Galway €1,096; and Limerick €1,004.

The year 2050 is 32 years away, which seems like a long time. However, if you think of it like this, a 36-year-old today, paying excessively high rent and is unable to save for a deposit for a mortgage, and perhaps even a pension contribution, is the person who may be reliant on the State entirely in retirement, and for far more than just rent. We have seen above that even paying the pension is a strain, so if there is a significantly increasing number of retirees solely reliant on that State for everything else, well, that creates a social landscape that looks very bleak.

This housing crisis does not simply affect low paid workers in 2018, it has the potential to affect an entire country, albeit far into the future. It is the decisions made today as a society that will change what that future looks like. Furthermore, it is the decisions you make today, as an individual that will determine what your own future looks like. **C**

Susan O'Mara is a Financial Services Consultant with Milestone Advisory.

CIVILS PROJECT ACTIVITY IN IRELAND IN 2018

SCOTT DELANEY, Research Manager, Construction Information Services (CIS), looks at current major civil construction projects that are planned for the coming year and beyond.

The Supreme Court has agreed to hear an appeal over the planned €280m 138km North-South Electricity Interconnector, which is due to run from Batterstown in Co Meath, to Turleenan, Co Tyrone. EirGrid proposes to construct almost 300 pylons in Meath, Cavan and Monaghan as part of the application.

A Strategic Infrastructure Development application has been lodged with An Bord Pleanála for a €20m extension at the Port of Foynes, Co Limerick. A decision is due in late 2018.

PLANS GRANTED

In June 2018 An Bord Pleanála granted permission with conditions for the €220m M28 Cork to Ringaskiddy Motorway Scheme. The scheme will involve the upgrade of the N28 between Bloomfield Interchange and Ringaskiddy village. Construction work is expected to commence in 2020 and take three years to complete.

Plans have been approved for a €160m municipal and hazardous waste incinerator at Ringaskiddy in Cork Harbour.

A Prior Information Notice has been issued by Transport Infrastructure Ireland (TII) for a preliminary market consultation relating to the procurement of Design & Construction works for the €3bn MetroLink (Estuary to Sandyford) Project. The 26km scheme will provide a through running metro service from Swords to Sandyford. The scheme is planned to commence in 2021 and to open by 2026/27.

In April 2018, Irish Water confirmed its ambitious Shannon to Dublin Water Supply Scheme. The €1.2bn scheme is due to commence in 2021 and take up to four years to complete.



SCOTT DELANEY,
Research Manager, CIS.

TENDER

Pre-qualification questionnaires are currently being assessed and tenders are expected to be issued to a select list of contractors in Q3/Q4 2018 for the €160m N22 Macroom to Ballyvourney Bypass.

Pre-qualification questionnaires have been issued to contractors by Mayo County Council for the €200m N5 Westport to Turlough Road Project, comprising the construction of 23km of national primary road, a new 2.5km national secondary road, and ancillary works.

Tenders are being sought from a select list of contractors for the €320m main runway works package at Dublin Airport. A main contractor is expected to be appointed in Q3/Q4 2018. Main work is expected

to commence in Q4 2018/Q1 2019 and it should take three years to complete.

Tenders are being sought for technical consultancy services for the €1bn M20 Cork to Limerick Motorway Scheme. The main construction work is hoped to commence in 2022.

Tenders have been issued to the pre-select list of contractors for the €75m N4 Collooney to Castlebaldwin Road Development Project in Co Sligo.

Tenders have been returned from contractors and are currently being assessed for the €20m Dinish Island Wharf Extension at Castletownbere, Co Cork.

CONTRACTS AWARDED

Main work is due to commence in Q3/Q4 2018 on the €80m Stillorgan Reservoir Redevelopment.

Main Contractor John Sisk and Son has been appointed for the €80m Dunkettle Interchange Upgrade Scheme in Co Cork.

Work is due to commence in Q3/Q4 2018 on the €16m Thurles Regional Water Treatment Works.

Work is due to commence in August 2018 on the €23.7m reservoir works in Saggart, Co Dublin, and to be completed in late 2019.

ON-SITE

Work is underway on the €29m Pumping Station and Pipeline at Vartry Water Treatment Plant.

Construction is also underway on an €80m upgrade to the Ringsend Wastewater Treatment Plant as part of the overall €300m Ringsend Wastewater Treatment Plant Upgrade Project. This work is expected to take two years to complete. Construction commenced in April 2018 on the €10m Clonakilty Flood Relief Scheme. Construction work is expected to take in the region of 24 months to complete.

Work is underway on the €80m Ringaskiddy Port Redevelopment Project. The proposed works comprise the construction of the marine and civil engineering infrastructure elements for a new container terminal and multi-purpose berth at Ringaskiddy Port, Co Cork. Construction work is expected to take 24 months to complete.

Project information was accurate on 19th July 2018. For the latest updates on these projects visit www.cisireland.com, email sales@cisireland.com or call 01 299 9200.



€200m N5 Westport to Turlough Road Project.

We frequently achieve savings of **more than 20%** for new clients.

Specialist Construction Brokers

Martin Insurance has a long history of providing tailored insurance solutions to the construction industry that stretches back to 1980. Our strong relationships with underwriters in Dublin and London, built over many years, enables us to place complex risks at competitive premiums.

Insurance & Bonds

Our long-standing clients include:

- ✓ General Contractors (PSCS)
- ✓ Formwork & Shuttering
- ✓ Scaffolding & Temporary Works
- ✓ Demolition & Asbestos Removal
- ✓ Civil Engineering & Groundworks
- ✓ Quarrying & Concrete
- ✓ Waste & Environmental
- ✓ Traffic Management
- ✓ Manufacturing & Engineering
- ✓ Roofing & Cladding
- ✓ Mechanical & Electrical
- ✓ Plant Hire & Crane Hire
- ✓ Airside & Marine Contractors
- ✓ Architects, Engineers and Surveyors

Client Solutions:

- ✓ Public, Products & Pollution Liability
- ✓ Employers Liability
- ✓ Professional Indemnity - Design & Construct
- ✓ Performance Bonds
- ✓ Motor Fleet
- ✓ Machinery & Plant
- ✓ Contract Works
- ✓ Property & Business Interruption
- ✓ Airside & Offshore Risks
- ✓ Employment Disputes
- ✓ Insurance Backed Warranties
- ✓ Trade Credit Insurance

Performance Bonds Service:

- ✓ Access to Irish, London-Market & European Underwriters
- ✓ Simultaneous facilities across 3-5 underwriters to support growth
- ✓ Central management of the information flow to underwriters including financials, workflow schedules and completion certificates to ensure continuous capacity at competitive rates
- ✓ Favourable terms and conditions

Recent Client Placements:

Design & Construct Professional Indemnity Risk

▼
30%
Premium reduction

Manufacturing Risk

▼
15%
Premium reduction & profit share agreement

Contractors Liability Risk

▼
25%
Premium reduction



New Business Contact

👤 James Martin
📍 Kilmore Business Park, Dublin Road, Cavan
☎ 049 432 7089 / 087 902 2000
✉ james.martin@mib.ie

MERCURY RISING TO DIVERSITY CHALLENGE

Fostering diversity in the workplace is a core value of specialist contractor Mercury Engineering.

Gender Diversification, Women in Construction, and Building Equality have come to signify the change in culture that has been happening in the industry in recent years. Companies that have diversified workforces are reaping many benefits in terms of greater productivity, better decision making and enhancement of their reputations.

Mercury Engineering has been at the forefront of changing the Irish construction industry with its programme to achieve greater gender balance in staff.



Joanne Cluxton, Head of Human Resources, Mercury Engineering

“Women in construction, as with any other industry, face certain challenges,” says Joanne Cluxton, Head of Human Resources, Mercury Engineering. “The adaptable approach we have taken at Mercury, particularly for staff with young families, has meant we have retained valued and

highly-skilled staff members.”

In addition to supporting the CIF’s #BuildingEquality campaign, Mercury also runs its own diversity initiatives.

Mercury’s “Women in Construction” week, which was held in November 2017 acknowledges the significant contribution that female staff make to the company’s success.

“As part of this week, a team of staff members visited a number of girls’ secondary schools to promote opportunities in Mercury,” Joanne Cluxton explains, “A number of female employees made presentations which covered how they have developed their careers since joining Mercury, and included encouragement and advice to the students about pursuing their career goals. We will run the Women in Construction campaign this year between the 12th and 16th November.” **C**



Kelly Matthews, Procurement Lead, HSDC Division, Mercury Engineering.

MY STORY: KELLY MATTHEWS, MERCURY ENGINEERING

I have a very outgoing personality. Working in an industry like construction enables me to interact with many different people each day.

I completed my Business Degree in the middle of the recession, but heard of an opening with Mercury and started out in

an administrative role in 2011. I progressed quickly into procurement, before advancing to my current position of Procurement Lead for the company’s HSDC (Hyperscale Data Centres) division.

I used to think that construction was a male-only industry. But, I couldn’t have been more wrong. In Mercury, women have for many years had roles such as apprentices and engineers. There are endless opportunities for women in Mercury with many in roles such as electricians, quantity surveyors, engineers or project managers. In my seven years with Mercury, I’ve witnessed a massive change in perception about women in the industry. For instance, some of the most senior positions on my current project are held by women.

However, I believe within the industry women are still finding that they have to prove themselves more than men, especially if theirs is a role that requires day-to-day decision making. I guess this is probably a cultural thing in the industry that will change in time.

I came into Mercury with a BSc in

Business. I have worked in many varied roles here. Mercury offers excellent learning and development opportunities, both inside and outside the workplace. As a company, it encourages personnel to move to new positions within the company. Our line managers always encourage people to extend their knowledge and develop their capabilities. Mercury also has the Education Assistance programme, which helps staff expand their skills through further education.

Over the past 18 months, I have had opportunities to travel throughout Europe on various projects, which has been a great experience for me.

CIF wishes to thank CPAS, Mercury Engineering, Collen Construction, Hilti, Walls Construction, Eaton Group and Flynn Management and Contractors for their support of the #BuildingEquality Campaign.

To learn more about the #BuildingEquality campaign visit our www.cif.ie/building-equality



BENEFITS OF PROPRIETARY HYDRAULIC PROPPING

- **SPEED** – significant time savings are achievable compared to a traditional structural steel solution
- **DELIVERY ON DEMAND** – equipment can be supplied to suit your procurement strategy, reducing on-site storage requirements
- **FLEXIBILITY** – all props have integrated hydraulic jacks with up to 1.1m stroke providing a wide working range
- **SUSTAINABILITY** – modular systems remove steel waste associated with fabricated systems
- **SAFETY** – minimal hot-works (welding) required on site



OUR APPROACH TO PROPPING DESIGN

All Groundforce struts are designed to comply with the resistance requirements set out in EN1993. Checks are made for the local resistance of all components such as swivel pins, bearing plates and flanged connections. A global resistance is calculated to take into account the effects of lateral loading and buckling. These are dependent upon the overall length of each strut and various other application specific load requirements. This tailored approach ensures that every detail of every strut is safe and supported by comprehensive calculation and testing.

As well as ensuring adequate resistance of the equipment to EN1993, all Groundforce designs are carefully engineered to meet the load requirements set out in EN1990, EN1991, and EN1997.

By applying the appropriate combinations of actions and effects, Groundforce engineers aim to provide economical solutions that do not compromise on safety.

- Applying EN1990 load combinations produces safe and economical designs
- EN1993 partial factors applied to give critical components a higher Factor of Safety (FOS)
- National annexes applied to European designs
- Safety and survivability included for a variety of accidental situations



SUPPORT YOU CAN DEPEND ON

Groundforce is Ireland's leading basement propping specialist offering quality-engineered design solutions for deep excavations. Our high quality range combined with local depots and skilled engineers help deliver safe and efficient basement propping solutions.

- LEVEL 2 BIM COMPLIANCE
- EC3 EUROCODE COMPLIANT DESIGN
- WIRELESS LOAD MONITORING
- UP TO 50M CLEAR SPAN AVAILABLE
- 500T CAPACITY STRUT
- SITE CO-ORDINATION TEAM

VIEW OUR WEBSITE

Find out more about the product range www.vpgroundforce.ie

Portlaoise Hire Desk 1890 882 364
Lisburn Hire Desk 0800 783 2055
www.vpgroundforce.ie



Groundforce
Specialist Construction Solutions

Director | Management | Site Worker | Office Staff | Self-employed

We have the solution for you



www.cwps.ie



CERS

BUILDING FOR YOUR FUTURE

Construction Executive
Retirement Savings

www.cers.ie



**MILESTONE
ADVISORY**

www.milestoneadvisory.ie



**CONSTRUCTION
INDUSTRY
RETIREMENT
TRUST**

www.cirt.ie

Tel: 01 407 1400 | Email: info@cpas.ie | www.cpas.ie

Milestone Advisory DAC t/a Milestone Advisory is regulated by the Central Bank of Ireland

IRISH WATER MINIMISING ON-SITE RISK

FERGUS COLLINS, Head Of Capital Delivery, Irish Water, writes about principles behind the authority's 'Work Safe, Home Safe' site safety programme.

Irish Water has recently made a commitment to work towards reducing our safety corporate risk rating for delivery of capital works from a (5.3) to a (5.2) by the end of 2019. This will be done through the completion of a number of projects identified in our Asset Delivery Safety Action Plan.

ASSET DELIVERY SAFETY ACTION PLAN

The Asset Delivery Safety Action Plan is focused on driving safety initiatives to reduce our accident frequency rate to below 0.8 and ensuring the reduction is sustainable. The overarching objective is to achieve our 'Work Safe Home Safe' vision that our assets and activities will not cause harm to anyone and in doing so, reduce our corporate risk.

Within this action plan, 49 key projects have been identified for completion in 2018 and 2019.

Examples of some initiatives planned for 2018 include:

- Increased safety communications internally and externally
- CIF collaborative engagement
- Stakeholder safety days – Regional and National
- Subcontractor direct engagement
- Safety conversations initiative led by Asset Delivery Management personnel
- Collaborative site visits between IW senior management and contractor senior management

IRISH WATER

As Ireland's national water utility we are responsible for providing water and wastewater services throughout Ireland. From coast to coast, our job is to ensure we deliver the highest quality drinking water to your taps every day and ensure that wastewater is treated correctly and safely returned to the environment. Irish Water is owned by our parent company Ervia, which is the commercial Semi-State multi-utility company responsible for the delivery of Ireland's national gas and water infrastructure and services.



Fergus Collins, Head Of Capital Delivery, Irish Water

WORK SAFE HOME SAFE STRATEGY

Safety is a core value of Ervia. We commit to establishing and maintaining the necessary systems, processes and resources in order to achieve this vision. We set ourselves challenging goals, measure our performance and seek to improve it continually. Ervia has developed a safety brand to help coordinate the elements within the framework and to provide greater unity, visibility and personal ownership of the safety value right across the Ervia business. At its most basic, it means, "work safely (be safe at work) and be safe at home" but it can also mean "work safely, in order to get home safely". The Work Safe, Home Safe framework is built on five pillars. These pillars are the structural elements that ensure that the framework is focussed on specific and relevant areas.

- Leadership and Safety Culture
- Safe Assets and Workplaces
- Safe Ways of Working

- Safe Delivery Partners
- Health and Wellbeing

It is our goal that our assets and activities shall not cause harm to anyone. In Ervia, we believe that a workplace without incident and harm is achievable and as an organisation, we are committed to achieving this. This is not an easy objective, but it is one shaped by a straightforward view that to cause harm to anyone is simply unacceptable. Until we consistently and reliably operate without causing harm, we cannot consider that we have been wholly successful in achieving our vision.

WORK SAFE, HOME SAFE BELIEFS

Our vision is supported by a number of core beliefs. These are the founding principles, the fundamental truths that underpin our vision. For the vision to be credible, and for safety to be a core value, these beliefs must be intrinsic to all of those who work for Ervia and to all that Ervia does. These beliefs are:

- All accidents are preventable.
- No activity is so important that it cannot be done safely.
- We all have a right to go home every day unharmed.
- We all have a responsibility to look after one another and ourselves.
- We all have a role to play in achieving our vision.

CIF CONSTRUCTION SAFETY WEEK 2018

I am delighted to announce that this year that Irish Water has partnered with the Construction Industry Federation to sponsor CIF Construction Safety Week in October. Safety is an everyday commitment and CIF Construction Safety Week will be an opportunity for the industry to generate more safety conversations through the individual initiatives that each company will run. **C**

Fergus Collins, Head of Capital Services, Irish Water, is a former President of the CECA and has over 30 years' experience working with contractors.



EUROCLASS A1
PERFORMANCE



ENVIRONMENTALLY
FRIENDLY



CE APPROVED
ETA 17/0976



BREATHABLE



STRONG AND
EASY TO USE



MOISTURE
PROTECTION



Magply

APPLICATIONS

Timber Frame | Render Systems | Passive Fire Protection
Rainscreen Cladding | Spandrel Panels | Modular Build
Floors and Ceilings | Steel Frame | Dry Lining

TESTED & CERTIFIED BY



LUCIDEON
image creating advantage



BUNCH
BYGNINGSFYSIK

FOR MORE INFORMATION

www.magply.ie | mike@magply.ie | +353 (0) 873 625 485

Bonds

Construction Guarantee is the leading specialist provider of Bonds in Ireland

Have you been requested to take out a bond on the contract you have recently been awarded?

Nowadays, the construction industry has specialists in every area and it makes sense to talk to the experts in Contract Bonds.

With over 500 clients in all areas of the industry, we understand your business. For an unrivalled service and a competitive quotation, contact Kevin O'Brien or Mark Hogan

Tel: 01-668 7240

info@constructionguarantee.ie

72 Northumberland Road, Dublin 4

www.bonds.ie



Construction Guarantee

Performance Bonds for the Construction Industry

CONSTRUCTION CONTRACTS ACT 2013 — WHAT SUBCONTRACTORS NEED TO KNOW

LARRY FENELON, Managing Partner, Leman Solicitors, outlines the key benefits for subcontractors in the Construction Contracts Act 2013.

On 25th July 2016, the Construction Contracts Act 2013 (the Act) became law. Two years on, many subcontractors are still unfamiliar with benefits introduced under the Act to getting paid and getting paid quickly.

The genesis of the Act was in the meltdown suffered by subcontractors between 2008-2010, when many went out of business because payments weren't made. Stories abound of subcontractors being offered €25,000 instead of the €250,000 owed, or else face two-plus years of highly contested arbitration, even though they completed the work.

The Act introduced key changes to industry payment practices, the most important of which are:

- 'Pay when paid' clauses are illegal
- Payments have to be made broadly on a monthly basis
- A suspension of work by a subcontractor is legal if payment is not received on time
- A payment claim can be decided by a neutral third party called an adjudicator within 28 days through 'adjudication'

HOW ISSUES ARISE

Any subcontractor who starts work on site without having a written contract in place with the main contractor is asking for trouble. They shouldn't, but they do. However, it is important to understand that the Act applies to oral contracts as well as written ones.

When and if they receive a subcontract from a main contractor, most subcontractors don't even read it. They just sign it. They, of course, shouldn't. They should check that payment and dispute resolution provisions adhere to the Act.

In our experience, we note that during the course of construction works, many subcontractors who engage us have not reviewed the subcontract to understand their rights or entitlements when issues arise. When any programme or payment issue arises, they should check the contract. Not doing so plays into the hands of the contractor as entitlements to payment are lost by not serving the correct notices on



Larry Fenelon, Managing Partner, Leman Solicitors.

“ THAT CULTURE OF TREATING THE CONTRACT AS A BURDEN RATHER THAN A BENEFIT HAS TO CHANGE IF SUBCONTRACTORS ARE TO EXPERIENCE ANY REAL BENEFIT FROM THE ACT. ”

time.

That culture of treating the contract as a burden rather than a benefit has to change if subcontractors are to experience any real benefit from the Act. There is very little sympathy from conciliators, adjudicators or arbitrators for subcontractors who do not progress payment claims in accordance with the contract. The rules of engagement

are set out in the contract after all. Just follow what it says. If you can't follow it, then instruct a solicitor to assist. You can bet the main contractor's team of quantity surveyors are hoping the subcontractor doesn't refer to the contract when making a payment claim, particularly when disputed.

The minimum payment provisions for subcontractors, together with the statutory right to suspend works, enhance the options available for subcontractors where they are not receiving payment when due.

ADJUDICATION SHORTENS PAYMENT DECISIONS

Importantly, adjudication will shorten the decisions on payment disputes from two years down to 28 days. This presents a distinct advantage to subcontractors who can bide their time preparing their claim and then commence adjudication, which will result in the contractor being under pressure to adhere to a strict timetable to defend the claim.

The speed of decision can only help the cash flow of subcontractors. The contractor can challenge the adjudication decision by way of arbitration, but the risk for the contractor of a second adverse award is high. **C**

For further information, contact Larry Fenelon or Maria Edgeworth of Leman Solicitors, Tel: 01 639 3000 or visit the website www.leman.ie



WESTERN
GLOBAL



MHM



SELWOOD
www.selwoodpumps.com

LAOIS HIRE
PLANT & TOOL

Official Irish Agents for leading global brands - Hire & Sale

- **Nationwide delivery available**
- **Warranty, parts & maintenance service**
- **Finance available on orders over €1000**



Visit: www.laoishire.com

Email: cstafford@laoishire.com | Phone: Conor Stafford (086) 1437878

DOCKLANDS CONTRACTORS SUPPORT LOCAL SCHEME DESIGNED TO MEET THEIR RECRUITMENT NEEDS

As the 10th group of participants graduate from the Dublin+ Docklands Construction Skills Course, **JIM HARGIS**, Employment Services Manager with St Andrews Resource Centre, outlines the background to this successful training initiative.

St Andrew's Resource Centre in Pearse Street coordinates the Eastside and Docklands Local Employment Service (LES). The service has two offices, located in Pearse Street and Amiens Street, and is mainly funded by the Department of Employment Affairs and Social Protection, (DEASP).

In 2014, the employment service identified a growing labour shortage that was developing in the construction industry. Considerable investment was taking place in Dublin Docklands, and it was clear that there would be a likely labour demand in Docklands and elsewhere in the Greater Dublin Area. A business model to supply local labour was developed, and this was different in character and focus to anything that had been developed before.

Our previous experience at St Andrews Resource Centre of providing over 72 staff to the construction site for the Waste to Energy Site facility in Ringsend demonstrated to us that to be successful, we needed to focus on the needs of the employer and more specifically the employment needs of subcontractors.

We asked what demands employers had and what needs could we service. What became clear quickly was that there was no appetite for "local labour schemes". However worthy, the experience of them was universally negative, and often the companies felt pushed into a corner. It was clear to us that the business case we needed to make had to put the employer's needs first and had to make financial sense to the company.

We examined the potential local labour force. There was local labour available, but often without appropriate skills or experience and frequently without the knowledge of how to access a building site as a useful employee. Suitable training was, therefore, the key with a provision included to demonstrate to potential employers the worth of the job-seeker.

From the start, we adopted a clear industry-focused approach making the business case to main and subcontractors that it is simply good business to employ our graduates. From that point, it was clear



Trainees learning key skills at the Dublin+ Docklands Construction Skills Course facility in Dublin Port.

that a good quality training company was required to provide guidance on the project, liaison with the contractors and flexibility in terms of delivering any course. After meeting various training providers we opted for a private sector trainer, Construction Industry Training (CIT), who already had links in the construction industry, and they became our partner in the project.

CIT consulted with us and the industry about possible needs and demands. Course design followed, and a large site was secured in Dublin Port from Dublin Port Authority, who became our third partner. Funding was received from the NEIC Task Force, DCC, Dublin Docklands and DEASP for a pilot project.

The recruitment process involves inviting applications for a three-week construction skills course, in an area of the port that is not easy to access. The course comprises all basic training modules required by construction regulations (Safe Pass, Manual-Handling, Abrasive Wheels, Working at Heights) along with additional modules currently in demand in the Dublin labour market (Vehicle Banksman, MEWP, Emergency First Aid). There is also a six-day construction skills module, where

participants learn to measure, cut, move, level, mix and fabricate in a construction environment.

Participants are required to attend on time and complete a full day's work over the three-week period that they are training. We provide all necessary personal protective equipment and participants keep these items as their own personal property. Once a participant has been assessed as having engaged satisfactorily with the course and maintained a satisfactory attendance record over the period of training, they are recommended to employers for suitable work.

CIT and the employer meet to discuss each graduate's overall capabilities. We aim to match graduates' skills with the needs of each employer. We can tailor the course to the specific needs and demands of the industry, and we remain flexible and open to suggestions.

So far, across the nine previous courses completed, of the 74 participants, 51 have been placed with employers, a placement rate of 69%. **C**

To learn more about the project phone 01 677 1930 or visit <https://www.standrews.ie/edles>



THE OPEN 2019 RETURNS TO ROYAL PORTRUSH

The Open to return to Northern Ireland for the first time in almost 70 years.



The Open is one of the world's greatest sporting events and in 2019 golf's original championship will make an historic return to Northern Ireland for the first time in almost 70 years when it is played at Royal Portrush in 2019.

There have been a record number of enquiries over the last 10 months for one of the most eagerly anticipated Open

Championships and thousands of fans are expected to descend on the beautiful Causeway Coast for a true festival of golf in what will be the biggest sporting event to ever have been held in this part of Northern Ireland.


There is no better way to enjoy the spectacle than in the luxurious surroundings of the official hospitality facilities. Whether

you're strengthening existing relationships, forging new ones or want to enhance your experience at the Championship, you and your valued guests can share in the excitement and drama of this prestigious occasion with over 10 hours of fully inclusive packages.

With the excitement already building, the first tickets to be released for the 148th Open are expected to sell out quickly as excited fans purchase their ticket to world class golf from a range of first class hospitality facilities.

Early season prices for all of The Open Hospitality experiences, including The Champions Club, The Claret Jug Pavilion and The Claret Jug Suites, are now available and will end on Wednesday 31st October 2018.

You can take advantage of these early season prices now from just £375 ex VAT per person at TheOpen.com/Hospitality2019 and secure your place at golf's oldest Championship.

Don't miss out on attending the 148th Open in style, act fast and get in touch with by calling 0044 1334 460010 or emailing Hospitality@TheOpen.com. 



WORLD CLASS GOLF. FIRST CLASS EXPERIENCE.

HOSPITALITY AT THE OPEN



The one true test returns.
14-21 July 2019 | Book now at TheOpen.com

THE
OPEN
148TH ROYAL PORTRUSH

CIFJOBS.IE OFFERS UNLIMITED FREE ACCESS TO INTERNATIONAL RECRUITMENT MARKET

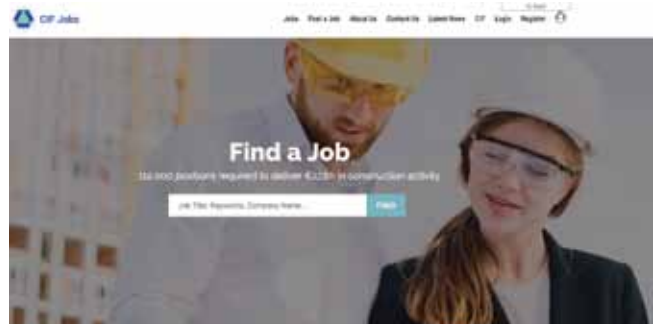
The Construction Industry Federation recruitment portal cifjobs.ie was established to target Irish diaspora and fill jobs required to deliver ambitious targets in Government housing, infrastructure and foreign direct investment strategies.

Demand for Skills in Construction to 2020, the 2016 independent DKM economic consultants report commissioned by the CIF, established that construction activity can sustain an additional 112,000 jobs up to 2020.

One of the big recruitment challenges facing CIF members is ensuring their recruitment adverts reach candidates that have the right credentials and experience to fill the positions on offer. cifjobs.ie not only promotes advertised positions on the web portal, it supports this with marketing activity and postings on LinkedIn, Facebook and Twitter.

Dermot Carey, Director, Safety & Training, CIF, says the free service offers members a straight-forward recruitment solution that is quick and easy to use.

“When we developed cifjobs.ie, our goal was to give members a recruitment tool that is easy to use and is optimised to reach the right candidates no matter what part of the world they are in. Once registered, there is no limit on the number of jobs that can be advertised, and it complements any mix of recruitment tools that members may be already using.



HOW CIFJOBS.IE WORKS FOR MEMBERS

cifjobs.ie facilitates free advertisement of job vacancies for CIF member companies (following initial registration). Just register at cifjobs.ie/register/ or phone 01 808 1301.

HOW CIFJOBS.IE FOR JOBBEEKERS

Jobseekers may search for advertised positions in terms of position, location and type of employment. Once a suitable position has been identified, candidates may apply for the position through a link provided. Additionally, jobseekers may register at cifjobs.ie/register/ for receipt of job alerts matching job postings in their preferred location. **C**

**CIF MEMBERS
POST
YOUR JOBS
FOR FREE**

**POST FOR
FREE**



CIF Jobs

www.cifjobs.ie

01 808 1301 | sales@cifjobs.ie

PUBLIC PROCUREMENT RULES CAUSING A RACE TO THE BOTTOM

The CIF has called on the Government to reconsider the current public procurement process, following a series of high profile contractor collapses and examinerships in recent months.

The CIF believes that the practice of 'lowest-cost tendering' is encouraged by the current public procurement process and has resulted in an industry-wide 'race to the bottom'.

"We have seen a concerning number of high profile contractor collapses and examinerships in recent months," says Martin Lang, Director, Main Contracting, CIF. "Many of these contractors have in some way fallen foul of what turned out to be unsustainable procurement. Under current public procurement rules, the process favours the lowest price rather than the best price. Therefore, if the initial brief is unclear, problems are inevitable as the design team works from that brief. It then goes out to tender with documentation that



Sean Downey, Director,
Specialist Contracting, CIF.

has not been adequately prepared.

Sean Downey, Director, Specialist Contracting, CIF, says that the Construction Contracts Act 2013, which was signed into law in 2016, was a big step forward for the industry.

"The Act places a statutory responsibility

on those procuring construction works to pay their contractors and subcontractors. It prohibits the old excuse of 'pay when paid', provides mechanisms for dispute resolution, and allows a contractor to suspend works in the event of non-payment.

"However, with a series of recent high-profile insolvencies, and 17 school projects in 2018 alone suspended due to contractor financial difficulties, we must ask ourselves what is going wrong."

Sean Downey says that if the NDP is to succeed clients need to take some degree of ownership and consider how they are procuring works.

"Clients need to have the oversight to analyse how healthy their supply chain is and also consider payment protection measures to ensure that those who do the work get fairly paid for that. If, as with the Carillion case, the State does not want to pay twice for the same work, it needs to put measures in place to ensure that money reaches those it is intended to." **C**



PERSONAL FINANCIAL SOLUTIONS FOR THE CONSTRUCTION & RELATED INDUSTRIES

Planning for all your financial needs



**MILESTONE
ADVISORY**

Helping you plan your Financial Future

Retirement Planning

Additional Voluntary Contributions (AVC)

Pensions

Investment Portfolios

Savings

Approved Retirement Funds (ARF)

Pensions

Investment Portfolios

Business Protection

Income Protection

Retirement Planning

T: 01-4068020 | E: info@milestoneadvisory.ie | www.milestoneadvisory.ie

Milestone Advisory DAC t/a Milestone Advisory is regulated by the Central Bank of Ireland
Milestone Advisory is an operating division of CPAS – Member of Brokers Ireland



DIPLOMA CENTRE

DIPLOMA IN CONSTRUCTION LAW

- Commencing 13 October 2018
- Flexible onsite and online learning options
- All lectures webcast
- Onsite workshops featuring problem based learning and small group work
- Specialised introductory streams for lawyers and non-lawyers
- Fee: €2,700

Our advanced level diploma provides a comprehensive overview of the specialised discipline of construction law and practice in Ireland. The teaching faculty features experienced practitioners from leading law firms and industry experts. The course covers the following module scheme;

1. An introduction to construction law
2. Procurement – the tendering process
3. Construction regulation
4. Construction contracts
5. Dispute Resolution

VISIT www.lawsociety.ie/diplomacentre
T 01 672 4802
E diplomateam@lawsociety.ie

Call for Proposals

Enhanced Long Term Social Housing Leasing Scheme

The Housing Agency is seeking proposals from interested parties for the provision of properties through long-term lease arrangements with local authorities to provide accommodation for households eligible for social housing support.

The proposals are being sought to :

- target newly built or yet to be built houses and apartments for leasing;
- target property developers and investors who are in a position to deliver housing at a reasonable scale; and
- provide for 25 year lease terms that require the property owner to provide day to day maintenance of the properties under a schedule of Management Services.

The Call for Proposals is available on the Housing Agency's website www.housingagency.ie.

The closing date for receipt of submissions is 5pm on Thursday the 25th of October 2018.



CIF FORECASTS 19,000 NEW HOUSING COMPLETIONS AS RESIDENTIAL CONSTRUCTION CONTINUES TO GROW

JEANNETTE MAIR, Economic & Policy Research Executive, CIF, writes that Government housing targets are ambitious but achievable if Government introduces supportive measures in Budget 2019.

There is no doubting that residential construction is currently in an expansionary phase. However, considering new dwelling completion data published by the CSO in June 2018, the CIF has now revised its forecast for the total number of new units to be completed in 2018 to 19,000 units (+30% year on year).

The National Planning Framework's National Policy Objective 32 targets the delivery of 550,000 additional households to 2040. A 'Housing Need Demand Assessment' will be undertaken for each local authority area to correlate and accurately align future housing requirements. Increasing urbanisation will also see the Repair, Maintenance and Improvement (RMI) market grow.



Jeannette Mair, Economic & Policy Research Executive, CIF.

units for the same period in 2017, an increase of 80.8%. Q1 2018 also saw the first permissions granted by An Bord Pleanála through Strategic Housing Development Applications, which accounted for 62% of the quarterly increase in dwelling units.

In summary, the leading indicators available to date show that:

- 6,300 residential units were commenced during the four-month period January to April 2018. The figures represent an increase of 15% (820 units) on the total number of units commenced during the same period in 2017. A total of 18,392 residential units were commenced in

Republic of Ireland since the beginning of 2018.

- 3,256 residential units were completed during the three-month period January to March 2018. The rate of completions represents a 26.9% increase in activity on the same period in 2017. 15,193 units were completed in the rolling 12-month period to the end of March 2018.

The construction industry is making several recommendations in its Budget 2019 submission relating to housing. These include:

- Extending the 'Help to Buy' incentive scheme beyond the 31st December 2019 to retain the added certainty it provides in the residential construction industry.
- Section 61 of the Finance Act 2017 increased the rate of stamp duty from 2% to 6% on all commercial transactions, including the acquisition of residentially zoned land, but allows for a refund of two thirds of the stamp duty (4%) paid on acquisition of residential land, provided the Commencement Notice is lodged within 30 months of the execution of the Instrument, or 31st December 2021. CIF recommends amending the period to 60 months and 31st December 2024 in Budget 2019, as residentially-zoned lands which are not serviced with water

ESB Connections by Type of Connection and Year

	2011	2012	2013	2014	2015	2016	2017
New dwelling completions	6,994	4,911	4,575	5,518	7,219	9,915	14,446
Unfinished	1,378	1,451	1,506	2,368	1,671	1,601	1,091
Reconnection	1,090	1,260	1,473	2,290	2,888	2,575	2,685
Non-domestic	827	723	653	753	845	832	962

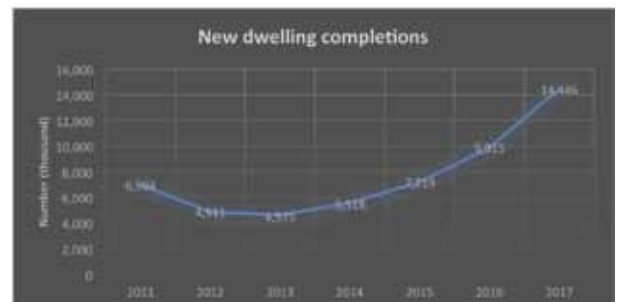
Source: CSO

Leading indicators help to forecast output levels in the sector and the new CSO completion data shows greater levels of convergence with commencement data. According to the CSO's new completion data, new completions increased by +45% in 2017 to 14,446 units.

While the new completion data points to an even greater level of supply constraint in the market at present, other leading indicators such as planning permissions show positive intended increases in future supply. In the first quarter of 2018, planning permissions were granted for 8,405 dwelling units, compared with 4,650

the rolling 12-month period to the end of April 2018. Individual/One-off housing units represent 24.7% of total commencements and increased by 5.8% on the same period in 2017.

- 3,778 residential units were registered with HomeBond during the five-month period January to May 2018. This figure is roughly similar to the figure for the same period in 2017. However, new registrations increased by 32.2% in the rolling 12-month period to the end of May 2018. It must also be noted that Global Home Warranties Ltd have recorded 1,040 new registrations in the



Source: CSO

supply are currently being purchased with the expectation that the water services will be in place in circa three to four years. This means that the 30-month period/31st December 2021 date for lodgment of a Commencement Notice cannot be adhered to in order to recoup the additional 4% stamp duty paid.

The CIF Budgetary recommendations are intended to maintain the current expansionary phase in the residential construction sector so that the targets set out in the National Planning Framework, *Project Ireland 2040* are both feasible and deliverable. **C**

SIG IRELAND

CONSTRUCTION ACCESSORIES | FACADES | INSULATION | INTERIORS | ROOFING | TECHNICAL INSULATION | AIR HANDLING

Streamlined for the future...

SIG CONSTRUCTION
ACCESSORIES

SIG FACADES

SIG INTERIORS

SIG INSULATION

SIG ROOFING

SIG TECHNICAL
INSULATION

SIG WORKPLACE

SIG AIR HANDLING

From groundworks to the roof and everything in-between, **SIG Ireland** delivers the full range of specialist building materials for your construction project, nationwide.

SIG can bring expert knowledge in specialist products to individual market sectors

- Education
- Health
- Commercial & Industrial
- Residential
- Renovation, Maintenance & Improvement



For more information please visit
www.sig.ie or email enquiries@sig.ie

SIG IRELAND

INNOVATIVE DIGITAL SOLUTIONS FOR CONSTRUCTION INDUSTRY

SEAN MURPHY profiles Software Support Group Ltd, whose software solutions are facilitating many Irish contractors in developing their businesses.

Software Support Group Ltd (SSG) was founded by Declan Costello and Ronnie Fleming to fill a gap in the construction sector for customisable project cost management software. The company offers software for project cost control, payroll, CRM for subcontractor management, opportunity management, property sales and rentals.

"Whether your company turns over €2 million or €250 million, you need to be able to manage your costs at project level and in real-time," explains Declan Costello. "We set out to address three key challenges. Firstly, many projects don't generate the profits the company owner desires; secondly, company owners worry about their level of liability for subcontractors RCT; and thirdly, it takes too long for project managers and management teams to get their hands on critical information about the finances of their projects."

MAXIMIZER CRM

The introduction of the Building Control Amendment Regulations (BCAR) in 2014 was a turning point for the sector and SSG. The company was ideally placed to offer clients solutions to manage many of the new challenges they faced as a result of BCAR.

"We customised our Maximizer CRM software package to meet the new challenges set down by BCAR," says Ronnie Fleming. "The package provides a broad range of solutions that include subcontractor pre-qualification and management; site access; audit and inspection, and incident management. This is all delivered through easy-to-manage dashboards, that facilitate communications and collaboration with project team members."

ADVANCED BUSINESS MANAGER

Main contractor Ward and Burke, with offices in Ireland, UK and Canada, has incorporated SSG project software into its operations.

"This client required an accounting and



Ronnie Fleming and Declan Costello, founders and directors of Software Support Group Ltd (SSG).

project control software solution that was multi-currency and allowed for reporting at sub-ledger and contract level," explains Declan Costello. "We provided a customised version of our Advanced Business Manager (ABM) Project Control software."

David Kirrane, Director, Ward and Burke, says that the ABM Project Control software has enabled the company to develop the business without having to invest too heavily in resources. "The real-time view of our project costs has allowed us to take on more projects without having to expand resources," he says.

ABM also has mobile applications for purchase ordering, time recording and service teams. ABM Project Control is integrated with Maximizer CRM, BOX Document Management software, Microsoft Office 365 and Quantum Payroll.

IRISH CONSTRUCTION SECTOR

"Irish contractors and subcontractors are adopting digital technology into their operations at an increasingly rapid rate," says Ronnie Fleming. "We can see first-hand how technology is solving many of the traditional challenges faced in the industry, particularly around safety, productivity, and most of all, labour shortages. For instance, drones are increasingly commonplace for conducting site surveys and inspecting

bridges. Building Information Modelling (BIM) has been integrated into many operations and is increasing productivity as well as improving communication and collaboration."

MOBILE APPS

Declan Costello explains that there is a growing emphasis on the use of mobile applications for procurement, safety, productivity and labour management.

"Everyone has a smart mobile device now, and the new generation of construction professionals and tradespeople expect to have information to hand whenever and wherever they need."

He says that the ease with which SSG software can be adopted into company processes, customised and scaled-up has been core to the company's and its clients' success.

"Our advice to any company starting the digital adoption process would be to examine not only their immediate needs, but also their future business needs. Can what they are considering be scaled-up and have increased functionality as their business expands, and will it offer a good return on investment?" **C**

To learn more about Software Support Group Ltd, phone 01 297 3326 or visit www.ssg.ie



Multi Unit
Schemes now on Site
NZEB FUTURE PROOFED

Insulated Concrete Forms - A Rated Structures



- High Performance REINFORCED CONCRETE Homes
- A One Stop Solution that Easily Meets or Exceeds Building Regulations for Structure, Insulation, Sound Resistance, Fire, Airtightness and Thermal Bridging - all as standard, at no extra cost
- New Amvic ICF 300 Form available now, offering
 - U-Value: $0.20\text{W/m}^2\text{K}$,
 - Y-Value: 0.02 ,
 - Air Permeability: $<2\text{m}^3/\text{h.m}^2$
- Sound Resistance + 58D_{nTw} .
- Fully Certified and Approved
- Cost Competitive, Rapid Build
- For Self Build, Housing Schemes, Apartments, Commercial, etc.

Amvic Ireland,
Naas, Co Kildare.
045 889276
www.amvicireland.com
Made in Ireland



PASSIVE HOUSE PERFORMANCE - TRADITIONAL BUILD COSTS

ELIMINATING THE RISKS CREATED BY RESPIRABLE CRYSTALLINE SILICA DUST

BRIAN HOLMES, BAM Ireland, outlines how the company addressed risks presented by respirable crystalline silica dust.

The BAM Ireland 'Beyond Zero' behavioural safety programme, in operation since 2014, ensures that workers' health and wellbeing is to the fore when designing, constructing and facility managing projects undertaken by the company.

"The wellbeing of all who work for us, and with us is paramount, not only when they are on our projects, but for the rest of their lives," says Tadhg Lucey, Director Responsible for Safety, BAM. "Every year we set strategic goals and KPI's around worker wellness."

In 2017 a pilot study was undertaken by BAM on the Aloft Hotel and Uninest Tannery Student Accommodation projects, which were being built by the company, to look at how the risk exposure of respirable crystalline silica dust (RCS) to workers could be eliminated as far as possible.

Using the general principles of prevention, the first thing to be examined was designing out the risk and substituting materials specified for those with less risk of exposure to RCS.

BAM's team's capability with BIM enabled us to build projects virtually and identify and eliminate the need to cut opes in concrete. The teams on both the Uninest Tannery and the Aloft Hotel closely liaised with the designers in finding solutions. This was coordinated by the BAM Health Safety & Environment Manager, Kathy O'Leary.

The outcome of this process was the use of Metsec walls instead of blockwork, ensuring pre-cast units arrived with pre-formed opes, using plasterboard instead of blockwork, shot-fixing instead of drilling for services and the use of façade cast-in anchors to prevent drilling. The team was unable to source a suitable floor sealant, which could be applied to prevent dust without affecting floor laying on the project.

Project controls implemented during the project started with the procurement process. Before any subcontractors commenced works, it was outlined in writing at the pre-commencement stage that the use of extraction for tools should be provided. Risk Assessment & Method Statements (RAMS) specifically included for the prevention/minimisation of RCS dust. Water suppression and extraction were used on tools. Dust was collected by vacuuming instead of sweeping. Lorries were covered, and water suppression was used on loads of stone. A specific RCS dust information board was erected, and FFP3 dust masks were provided at Personal Protective Equipment (PPE) stations.

Training and awareness were paramount to the success of the pilot scheme. For many years BAM has been using online induction, and the topic of RCS dust is included in induction. A site-specific induction was also held on each project, and RCS dust was included in this. The issue was covered in toolbox talks, whiteboard meetings and Safe-2-Starts. Posters were placed on safety noticeboards. The topic was a focus for the Beyond Zero leadership team and was a specific item on inspections and audits.

BAM partnered with Hilti who gave demonstrations of how



the extraction units worked and offered a favourable rate for subcontractors to purchase extraction units for tools.

Site operatives favoured the full-face mask if Respiratory Protective Equipment (RPE) was needed, as it fulfilled BAM's criteria of providing eye protection, didn't steam up, and eliminated the need to be close-shaven while preventing exposure to RCS.

The team provided a set of recommendations to be implemented company-wide.

The BAM team on the pilot projects found:

- The use of BIM and early design engagement and co-ordination significantly reduced the instances of builders works producing RCS
- The substitution of building products such as Metsec and the use of pre-cast units, cast-in services and off-site construction all minimised the production of RCS
- Where substitution was not possible, BAM promoted dust suppression and extraction at source. By partnering with Hilti, subcontractors could avail of the opportunity to purchase extraction units at a favourable cost
- By implementing the control measures early in the project and heightening the awareness of the dangers of exposure to RCS, the standard was embedded into the project.

The outcome of the pilot study has been shared within the company, the wider BAM Group, the CIF Executive Safety Committee, and the Health and Safety Authority. **C**

G.K. Nets

HIGH QUALITY SAFETY NETS

MANUFACTURED
TO EN1263-1

At G.K. Nets we pride ourselves on being Ireland's market leader when it comes to the manufacturing of safety nets for the construction industry.

Our nets comply to the EN1263-1 standard. We manufacture all our safety nets using the highest quality netting. All nets come with border rope test patches and certificates of conformity. We can also arrange for annual testing of test patches and can provide a repair service for torn and damaged nets.



Please call and speak to a member of our team to discuss all your safety netting requirements:

ADDRESS: Foresters Hall Balglass Road, Howth, Co. Dublin, Ireland, D13 A363

PHONE: 01 839 1833 **MOBILE:** 087 6798866 **EMAIL:** gknets@eircom.net



WE SAVE YOU TIME



MANAGING WORKERS CREDENTIALS &
CHECKING SUB-CONTRACTORS CERTS
IN REAL-TIME, ONLINE OR IN APP.



team@qualepass.com
qualepass.com 057 9300 007

Qual-ePass

MINISTER CONGRATULATES CIF CONTRACTORS ON THEIR SUCCESS

A message from
PATRICK O'DONOVAN
TD, Minister of State
for Public Procurement,
Open Government And
eGovernment

I congratulate all the companies, their employees and, of course, their clients who have contributed to what has been yet another progressive year for the construction sector. The increase in turnover and employment levels across the various sectors is most welcome from Government's perspective. It reflects an economy that has shown an average of 4.4% growth in the years 2013 – 2017, with unemployment figures down from 16% in 2012 to just below 6% in April of this year.

The increase in export activity demonstrates growing diversity that will stand the sector in good stead in more challenging economic times. Government's commitment to advancing digital technologies in the delivery of the National Development Plan will further expand the sector's export potential.

There is evidence too that the recovery in the sector is spreading beyond the urban centres where the 'green shoots' were first seen in 2013. Recent analysis also highlights a welcome increase in residential construction activity while growth in other areas remains strong.

Our workforce is internationally renowned for its skills, professionalism and innovation which has contributed to sustained investment, even during the toughest years of the recession. In this regard, the construction sector has played a key role in the recovery both in the construction of vital public and social infrastructure but also attracting inward investment by recording extremely positive outcomes amongst the sectors' large, multinational client bodies.

Confidence levels in the Irish economy are undoubtedly high, but it would be remiss not to mention the challenges; housing, Brexit and the current uncertainty



Patrick O'Donovan TD, Minister of State for Public Procurement, Open Government And eGovernment

in global trade arrangements have the potential to impact further growth.

Skills shortages and the persistently low margins that are evident in certain sectors are challenges that are particular to the construction industry. Skills shortages allied with the uncertain global trade situation are likely to increase inflationary pressure in the short to medium term whereas low margins are impacting relationships and payments in the extensive construction supply chain. If not addressed, the capacity for the industry to grow is limited.

Government is committed to working with industry to manage these challenges.

Indeed, it is imperative so that all citizens and businesses may enjoy the benefits of the substantial investment that will accompany the National Development Plan.

I look forward to positive engagement with the industry over the coming months as we consider the optimum means of procuring the necessary expertise to deliver *Ireland 2040* in a sustainable, efficient and cost effective manner. **C**

Patrick O'Donovan TD, Minister of State for Public Procurement, Open Government And eGovernment



L to r: Donal McCarthy, Managing Director Ireland East, John Sisk & Son; Dominic Doherty, President, CIF; Pat Lucey, Senior Vice President, CIF, and Regional Managing Director, Civils Ireland, John Sisk & Son; and Tom Parlon, Director General, CIF.

CIF TOP 50 CONTRACTORS PLAY PIVOTAL ROLE IN ATTRACTING FDI TO IRELAND

Irish construction industry leaders gathered at a special event in the Iveagh Garden Hotel on 3rd July to hear Tom Parlon, Director General, CIF, announce the Construction Top 50 CIF Contractors for 2018.

The combined turnover of Ireland's top construction firms increased by €720m to reach €6.72bn in 2017. *Construction* magazine figures showed a total turnover of €6.72bn for the Top 50 CIF Contractors in the past year, with €5.1bn of this activity taking place in Ireland and €1.62bn resulting from exported construction services.

"This is an impressive result, even more impressive when the lack of balanced regional development and the slow rate of recovery in housing is taken into consideration. The Top 50 listing gives a clear indication that construction is a dynamic industry sector looking to the future with vigour and ambition to deliver complex construction programmes at home and overseas," said Robbie Cousins, Editor, *Construction* magazine.



L to r: Paula Thornton, Business Development Manager, CPAS; Marci Bonham, Managing Director, Hilti Ireland; Michael Delaney, Carroll Joinery and Susan O'Mara, Financial Services Consultant, CPAS.



L to r: Tiffany Quinn, Marketing & Communication Director, mac group; Philip Matthews, Leadership Consultant and Catherine Murphy, Senior Project Manager, KMCS.



L to r: Chris Davies, Managing Director, DRS Bonds; Dominic Doherty, President, CIF and Paul Whitnell, President, British Irish Trading Alliance.



L to r: Paul Stewart, Managing Director, Stewart Construction; Tiffany Quinn, Marketing & Communication Director, mac group, Anne Dermody, Business Development Director, Social Innovation Fund Ireland and Tom Parlon, Director General CIF.



L to r: Tom Parlon, Director General, CIF; Dominic Doheny, President, CIF; Tara Flynn, Director, Flynn Construction, and Chairperson, CIF Galway Branch; and Pat Lucey, Senior Vice President, CIF.

"Irish main and specialist contractors are absolutely critical to the Irish economy's competitiveness," said Tom Parlon, Director General, CIF. "The largest corporations in the world locate in Ireland for many reasons. But, if our main and specialist contractors were not world-class they would never establish a footprint here. Ireland is working because this sector is working. Without the success of Irish construction, we would not have had the ability to attract tech-savvy and forward-thinking multinationals like LinkedIn, Google, Facebook, Eli Lilly, to name but a few, and this is now recognised by the IDA and the wider Government apparatus."

The event was sponsored by DRS Bonds, Ayming, British & Irish Trading Alliance (BITA), CPAS, Silver Shemmings Ash Solicitors



L to r: Gabriel MacGrath, CIF; Claire Graydon, Quigg Golden and Ash Sudding, Ayming.

and The Irish Post. Chris Davies, Managing Director, DRS Bonds said, "Ireland's economy is the fastest growing in Europe and we are very excited about the prospects for the Irish construction industry in the coming years. We look forward to working with Irish contractors to ensure that they are best placed to take advantage of the opportunities that arise." **C**



L to r: Bernardine Walsh, Membership Development Executive, CIF; Hayley Elliott, Director, Construction Network Ireland and Joanna Kiernan, Communications Executive, CIF.



L to r: Dermot Carey, Director, Safety & Training, CIF and Tom Murphy Business Development Manager, Eaton.



L to r: Sean Downey, Director Specialist Contracting, CIF; Phil Kane, Country Manager, Eaton Group and Colm Burke, Director, Mercury Engineering.

WORLDSKILLS COMPETITION FLAG HAS DUBLIN STOPOVER

The WorldSkills flag made a flying visit to DIT Grangegorman campus, Dublin, recently in preparation for the 45th WorldSkills competition, which will take place in Kazan, Russia in August 2019. Fifteen Irish apprentices competed in last year's WorldSkills competition, which took place in Abu Dhabi, UAE.

The Russian delegation, who brought the flag, were greeted by Prof Brian Norton, President, DIT; Dr Barry O'Connor, President, CIT; Thomas Stone, President, IT Tallaght and Ray English, Chairperson, WorldSkills Ireland.

At the event were 14 students from DIT and Waterford IT, who participated in the inaugural IrelandSkills BIM (Revit) Competition in March, including competition winner Ryan Dempsey, who will be presented with a Department of Education Silver Medal later this year in recognition of his achievement.

Speaking at the event, Ray English



L to r: Prof Brian Norton, President, DIT; Aaron Ronan, Winner of Medallion for Excellence in Construction Steelwork, WorldSkills, Abu Dhabi 2017; and Gary Horgan, Heavy Vehicle Maintenance competitor, WorldSkills Abu Dhabi 2017.

welcomed the flag and delegation, which is travelling around the world to competing nations before next year's event.

"We are delighted to welcome the WorldSkills flag and Russian delegation to our campus in Grangegorman and are very excited at the prospect of bringing a team

to next year's finals," said Ray English.

Ireland WorldSkills is currently organising the next IrelandSkills Competition, which will take place later this year. They hope to identify another 15 competitors from this event to bring to the WorldSkills Competition in Kazan. **C**

PLAQUE UNVEILED AT CIF HEADQUARTERS MARKS CONTRIBUTION OF THOMAS GRUBB TO ASTRONOMY

John Halligan TD, Minister of State for Skills, Training, Innovation, Research and Development, has unveiled a plaque in front of CIF headquarters in Dublin to commemorate the contribution of Thomas Grubb to astronomy in Ireland and worldwide.

In the 1830s, Thomas Grubb pioneered telescope manufacturing from his base close to Charlemont Bridge on Dublin's Grand Canal. The National Committee for Science and Engineering Commemorative Plaques, the Dublin Institute for Advanced Studies (DIAS) and the Construction Industry Federation (CIF) have erected a permanent marker commemorating Grubb's achievements.

The plaque was unveiled at the site of Grubb's first engineering works on Canal Road in Dublin.

"Like myself, Thomas Grubb was a Waterford native, hailing from Portlaw," said Minister Halligan unveiling the plaque. "He first began producing telescopes in Dublin in 1837. His firm grew rapidly over the years and became one of the leading telescope manufacturers in the world. At its height, Grubb and Son employed over 400 people.

"Grubb's contribution to astronomy was immense. His firm contributed to telescopes in India, Australia, South Africa and the Crimea, as well as Greenwich and Dublin. I am delighted to be commemorating his significant achievements by unveiling this plaque today."



L to r: Minister John Halligan TD, Dr Eucharia Meehan, CEO and Registrar of the Dublin Institute for Advanced Studies (DIAS), Tom Parlon, Director General, CIF; and Prof Tom Ray, DIAS.

Professor Tom Ray of DIAS said Grubb's work was of such high quality that much of the equipment the firm built is still in use today.

"A fine example of his work can be seen in Dunsink Observatory, part of the Dublin Institute for Advanced Studies," he explained. "This telescope, known as the South Refractor, is still used by the public to view the stars and planets. Despite being 150 years old, its Victorian clock mechanism and mechanics function perfectly."

The unveiling of the plaque was attended by Tom Parlon, Director General, CIF; Dr Eucharia Meehan, CEO and Registrar of DIAS; and members of the history of science and astronomical communities in Ireland. **C**



Brigid Finn, CWPS, Paul Fogarty and Dominic Doheny, President, CIF.

CIF HONOURS CARPENTER PAUL FOGARTY AT HIS 100th BIRTHDAY CELEBRATION

The CIF and the Construction Workers' Pension Scheme (CWPS) have honoured Paul Fogarty, who celebrated his 100th birthday on the 26th July.

Mr Fogarty was recognised for his outstanding contribution to the construction industry and his beloved trade of carpentry. Dominic Doheny, President, CIF, presented Mr Fogarty with a copy of photographer Michael Durand's *The Nurses' Home*, a photographic documentary of the Mater College of Nursing, which was built in 1954. Mr Fogarty remembers his time working on the project very fondly.

"It was one of the finest buildings in the city at the time. It had the best of materials and workmanship," Mr Fogarty said.

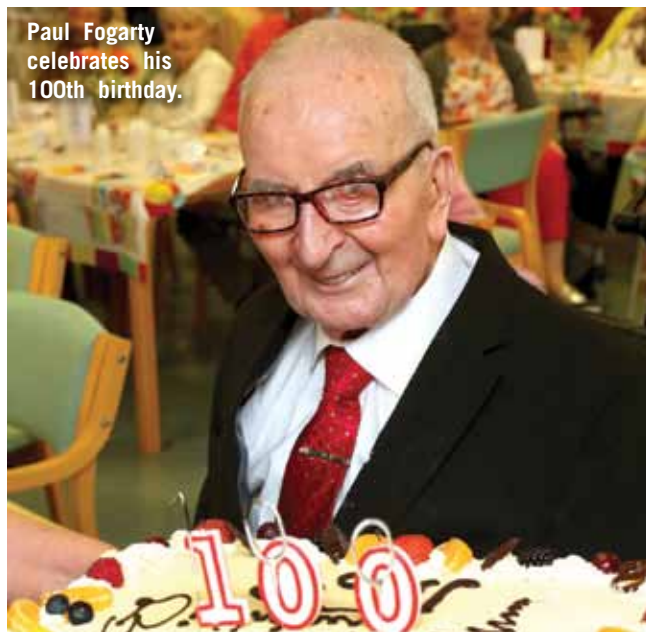
"I am delighted to be a part of Mr Fogarty's centenary celebrations," said Dominic Doheny. The Irish construction industry has been built on the efforts of craftsmen like Paul Fogarty, whose passion for excellence, for creating something from nothing and improving the world around us has been a lifelong affair."

Mr Fogarty was delighted to reach his 100th birthday and very much enjoyed planning his centenary celebration. "I never thought I'd see this age," he said. "I saw a lot of changes over my lifetime."

Paul Fogarty was born on a small farm in Ballybrophy, Co Laois, in 1918, the second eldest of five children. When he was 15 years old, his aunt, in whose grocery store he worked, asked a local carpenter, Michael Fitzpatrick of Grantstown, to take him on as an apprentice. When his apprenticeship was completed, a document was drawn up to declare that he was now a qualified carpenter, as was the practice of the time.

Mr Fogarty carried out some work in the local area before moving to Dublin, where he spent most of his working life with T&J Macken of Dun Laoghaire. His most vivid memory of work is building the old Nurses Home for the Mater Hospital in the early 1950s. It was demolished to make way for the new Mater extension on North Circular Road over a decade ago. **C**

Paul Fogarty celebrates his 100th birthday.



Paul Fogarty and Dominic Doheny, President, CIF.



JOHN CRADOCK LTD

CIVIL ENGINEERING CONTRACTORS



Arklow Water Supply
Scheme Design & Build



Kilkenny Central Access
Scheme – Phase 1

We work with people in an open and co-operative manner, and use our experience and expertise in order to deliver high quality and value to all of our clients, from private to public and semi-state.



Unit 5, Kilcullen Business Campus, Kilcullen, Co. Kildare, R56 W244

Tel: 045 484484 Fax: 045 484485

Email: info@johncradock.ie Web: www.johncradock.ie

ACCESS ALL AREAS



SPECIALISTS IN:

- Underpinning & Subsidence Repair
- Mini Piling
- Ground Anchors
- Sprayed Concrete
- Grouting
- Bridge Repairs
- Coastal/River Erosion Protection
- Rock Fall Netting/Barriers
- Piling, Restricted Access/
Low Headroom Specialists

MANNING

GROUND ENGINEERING CONTRACTORS LTD.
STABILITY YOU CAN BUILD ON

Ireland Office
Factory Hill, Glanmire, Co. Cork, Ireland.
T: + 353 21 435 3082
E: info@manninggroup.ie
www.manninggroup.ie

UK Office
Beauchamp Court, Victors Way, Barnet, Herts, EN5 5TZ.
T: + 44 203 368 3968
E: info@manninggroundeng.co.uk
www.manninggroundeng.co.uk





L-r Dominic Doherty, President, CIF; Karen Leonard, CNM Portiuncula; Tara Flynn, Chairperson, CIF Galway Branch; Aishling O'Shaughnessy, CNM Portiuncula and Justin Molloy, Regional Director, CIF at St. Theresa's Children's Ward, Portiuncula.

GALWAY BRANCH SUPPORTS TWO WORTHY CAUSES



Claire Shiels, Laura Lynn Foundation, Tom Parlon, Director General, CIF; and Tara Flynn, Chairperson, Galway Branch CIF, at CIF Head Office in Dublin.

CIF Galway Branch members and guests who attended the CIF Galway Branch Gala Ball in April at the Ardilaun Hotel, Galway, raised a total of €7,000, which was divided between two charities – Laura Lynn Foundation and The Comfort Fund, St Therese's Children's Ward, Portiuncula – chosen by Galway Branch Chairperson Tara Flynn, Paul Flynn Construction Ltd.

"On behalf of the CIF Galway Branch I would like to thank all the guests and members of the CIF Galway Branch for their generous donations to these two very worthy causes," said Tara Flynn.

Each charity received a donation of €3,500, which was presented at events in Galway and Dublin. **C**

ANNUAL IHBA LUNCH ATTENDEES TOLD ABOUT OPPORTUNITIES IN THE COMING YEAR

The second annual Irish Home Builders Association Lunch was held in the Marker Hotel, Dublin recently. The event was opened with an address by IHBA Chairman Anthony Neville, where he outlined the progress and challenges for the industry in the past year and highlighted some of the opportunities that lie ahead for the coming year.

Guest speaker and entertainer David Meade, regaled guests with his unique mentalist show.

Hubert Fitzpatrick, Director, Irish Home Builders Association, said the event was a great success.

"The afternoon was attended by over 200 members and guests and was an opportunity for them to network and discuss a wide variety of issues of interest. We look forward to hosting the lunch again next year." **C**



Hubert Fitzpatrick, Director, IHBA; Anthony Neville, Chairman, IHBA and David Meade, guest speaker at the IHBA Annual Lunch in the Marker Hotel Dublin.



It's Time to Change How We Label Cables

Structured cabling is everywhere. construction, data centres, telecommunications, power, switch gear, robotics, transportation, medical and so on. Hidden behind panels and inside boxes, our critically important cables have been typically labelled using adhesive based solutions, tricky to install, they can wrinkle, fade, even fall off entirely. TagPro™ is different.

TagPro™ is a patented system which requires no special printers and uses no adhesive, but rather clips onto the cable in one simple fast motion. This robust device will also slide and rotate on the cable, useful for when space is tight and labels are not always easy to reach. TagPro™ can also be removed easily without leaving sticky residue behind.



The TagPro™ system is faster to install on the cable. This robust system won't wrinkle, fade or fall off, yet it is easily removable by hand. The software printing solution will work with any browser and the PDFs it creates can be read on any system. Also, you need no special printers, just a standard A4 laser. TagPro™ is available in boxes of 200 and 1,000 units, each box also contains specialised sheets for tag printing. Most other labelling systems we have seen use locally installed PC based software which we have replaced with our secure and easy to use online printing app.

We have begun in the data centre & CCTV sectors with a product designed to cater for CAT 5/6 cables. A fibre solution is currently in the final stages of development and due for release later this year. Close on the heels of this will be systems to cater for larger power cables and switch gear.

- Fast & easy to install.**
- Adhesive free**, no sticky residue.
- Can **rotate and slide** on the cable.
- Can easily **be removed** without tools.
- Free **online printing app**, uses any system.
- Robust**, won't wrinkle, fade, or fall off.
- Specialised sheets included for use with **any A4 laser printer**.

INDUSTRY NEWS

SUIR ENGINEERING BECOMES FIRST IRISH M&E CONTRACTOR TO ACHIEVE ISO 45001:2018 STANDARD

Suir Engineering has become one of the first organisations in Europe to achieve the new ISO 45001:2018 Occupational Health & Safety standard in addition to achieving the ISO 9001:2015, and the 14001:2015 standard in conjunction with the EQA Ireland. This also makes Suir Engineering the first M&E installation company to achieve the new ISO 45001:2018 standard in Ireland.

"The migration to ISO 45001:2018, which was published in March 2018, demonstrates our strong commitment to Quality, Environmental and Health & Safety Management Systems and re-affirms our position as a leader in the M&E industry," commented Paul Cremmins, Director with Responsibility for Quality, Environmental, Health & Safety. "This represents the achievement of a very important strategic objective for Suir Engineering, which has not only allowed us to demonstrate the value we provide, but also the commitment of our leaders to providing a safe and



L to r: Paul Cremmins, QEHS Director, Suir Engineering; Sinead Dowd, IMS Coordinator, Suir Engineering; Graeme Allen, Lead Auditor, EQA Ireland; Edel Brennan, QEHS Regional Manager, Suir Engineering; Kieran Roche, QEHS Regional Manager, Suir Engineering and Tom Prendergast, QEHS Manager, Suir Engineering.

healthy workplace for all employees and stakeholders."

Paul Cremmins added that successful collaboration, whether with clients or suppliers, is at the very heart of the business's success. "It encourages

innovation, creativity and productivity across the whole life cycle of our projects. I would like to thank our staff for their input and commitment to the achievement of this standard." **C**

GENERATION APPRENTICESHIP CAMPAIGN UPDATE



Dermot Bannon, who was one of the judges for the Generation Apprenticeship Competition 2018.

The Generation Apprenticeship campaign will continue to be rolled out in 2018, 2019 and beyond.

The objectives of the campaign are to:

- Promote awareness of apprenticeship and traineeship
- Promote awareness about the value of the apprenticeship route to a career for both individual learners and employers
- To encourage people to consider an apprenticeship, when choosing their education route, be it post-secondary or lifelong learning

Generation Apprenticeship has a number of key audiences including employers, prospective apprentices of all ages and backgrounds including school leavers, career changers, women, key influencers such as guidance counsellors, teachers and parents and providers of education and training.

The campaign is spread across a number of different channels, including a national PR campaign; social media campaign across Facebook, Twitter and LinkedIn; and exhibition stands at events such as Higher Options, the National Ploughing Championships and the National Institute of Guidance Counsellors conference.

A National Apprenticeship Week will take place from the 5th to 9th November during which providers of apprenticeship training will host open days to showcase their apprenticeship programmes. **C**

DR SHARON MCGUINNESS APPOINTED NEW CEO OF HSA



Dr Sharon McGuinness, CEO,
Health and Safety Authority.

The Board of the Health and Safety Authority (HSA) has appointed Dr Sharon McGuinness as its new Chief Executive Officer. Dr McGuinness took over the role on 1st July, following the retirement of Martin O'Halloran.

Prior to joining the HSA, Dr McGuinness worked in government affairs and global chemical regulations for Hewlett-Packard and also with the European Chemicals Bureau as a scientific officer in relation to classification and labelling. In addition, she has held posts in academia and the pharmaceutical sector.

Pat Breen TD, Minister of State with Special Responsibility for Trade, Employment, Business, EU Digital Single Market and Data Protection welcomed Dr McGuinness's appointment.

"Dr Sharon McGuinness is an energetic senior executive with extensive experience in the public and private sector. She will bring a wealth of knowledge to this role," he said. "Working with the current team in the Health and Safety Authority, Sharon will build on the successes of recent years and take the organisation into a new phase of development. I wish Sharon all the best in her new role and have every confidence that the organisation will prosper under her leadership."

The Chairperson of the HSA, Tom Coughlan, welcomed the appointment of Dr McGuinness saying that her depth of experience and ability would position the authority well in delivering on its strategic vision of healthy, safe and productive lives. **C**

HSA LAUNCHES ONLINE SAFETY COURSE FOR SMALL CONTRACTORS AND SELF-EMPLOYED

The Health and Safety Authority (HSA) has launched a short, interactive on-line course titled 'An Introduction to Construction Safety for Small Contractors and the Self-Employed'. The course has been developed by the HSA with the support of the CIF, in order to provide relevant health and safety information to small construction contractors and to raise awareness of the importance of occupational safety, health and welfare in construction.

The 30-minute course is free and can be accessed through the authority's e-learning portal, <http://hsalearning.ie>. The course is aimed at construction contractors, in particular small contractors and the self-employed. It is also suitable for employers and employees working in the construction sector, key duty holders, or those employing small contractors to carry out work.

On successful completion of this course learners should be able to:

- Identify key duties under health and safety legislation
- Recognise key hazards and risks in construction
- Understand the consequences of unsafe work practices
- Source relevant information on construction health and safety, including the Safety Statement

"Recent research by the HSA shows that smaller contractors are more than three times more likely to have fatal accidents than larger



organisations," said Michael McDonagh, Head of Construction Policy with the HSA. "This course offers learners an insight into the requirements of the Construction Regulations and practical safety and health on site. It highlights some of the key hazards in the sector and will be a useful resource, particularly for small contractors and sole traders." **C**

To see the full range of HSA online courses on offer, visit www.hsalearning.ie

L&M KEATING CEO CALLS FOR REFORM OF PUBLIC PROCUREMENT POLICY

Speaking at a recent Shannon Chamber of Commerce event in Dromoland Castle with Minister Eoghan Murphy TD, Minister for Housing, Planning and Local Government, Gordon O'Regan CEO, L&M Keating, said the procurement rules for large publicly funded infrastructure and housing contracts in this country are not fit for purpose and are forcing construction companies out of business every week.

"Government must act now to make public procurement rules compatible with viable businesses. The tight margins on these contracts cannot continue without wiping out a large section of the Irish construction industry," he said. "This Government has laid out an ambitious infrastructure plan in *Project Ireland 2040*. This policy and planning framework for the social, economic and cultural development of our country is a powerful one with huge potential, but if it is to succeed it will need an agile construction sector that can



L to r: Tom Parlon, Director General, CIF; Pat Breen TD; Helen Downes, CEO, Shannon Chamber; Eoghan Murphy TD, Minister for Housing, Planning and Local Government; Mary Considine, President, Shannon Chamber and Gordon O'Regan, CEO, L&M Keating.

respond to the needs of Government."

He added that the current procurement rules that govern large infrastructure and housing projects in this country must be reformed in line with best international practice.

"The rules today have allowed a 'race to the bottom' to take hold, where price is the main determinant of successful bids. This is a dangerous and destabilising model that

if allowed to continue could decimate large tracts of the indigenous construction sector in this country."

He concluded by saying that the recent well publicised collapse of several construction groups operating in the Irish market lays bare the perilous position that many Irish construction companies find themselves in as they navigate public procurement rules. **C**

UK CONSTRUCTION WEEK SET TO TAKE PLACE ACROSS NINE ARENAS

Innovation is the key theme for this year's UK Construction Week (UKCW), which returns to the NEC in Birmingham from 9th to 11th October next.

UKCW will champion innovating and pioneering ideas, projects and products via a new Innovation Trail, which runs through each of nine shows: Build Show, Energy 2018, Timber Expo, Building Tech Live, Surface & Materials Show, HVAC 2018, Civils Expo, Plant and Machinery Live, and Grand Designs Live.

"There's been a lot of focus on what's not right in the construction industry in recent times," says Nathan Garnett, UKCW Event Director. "The Hackitt Review and ongoing inquiry continues to demonstrate the need for radical change in the way we design, construct and maintain buildings; change that will touch every part of the industry and its supply chain. But, if we are to learn the lessons from the past, we also need a platform to see, touch and debate the new ideas and solutions in development for the future.

High-level discussion around important issues such as the digital future of construction, diversity, Brexit, tackling the housing crisis and new industry delivery

Architect and tv presenter George Clarke speaking on stage at UK Construction Week 2017.



models will take place on the main stage. There will also be a heavy focus on the lessons learned in the past year, such as fire safety and how the industry is moving forward.

Speakers this year will include Phil Wilbraham, Expansion Programme Director at Heathrow; Bridget Rosewell OBE, Commissioner at the National Infrastructure Commission; Ben Derbyshire, President, RIBA and Ruth Davidson, National Housing Federation Executive Director.

Beyond the main stage, each of the nine shows will be tackling specific issues

within its sector of the industry.

In addition to brushing up on technical and industry knowledge, there will also be sessions around practical solutions to promote diversity, equality and inclusion, safety and mental health and wellbeing.

Opportunities to celebrate include the Construction Enquirer Awards, hosted by architect and tv presenter George Clarke, Voltimum Smart Solutions Awards and the Structural Timber Awards. **C**

Early registration for all events is recommended. To register visit www.ukconstructionweek.com

ARDMAC APPOINTS ENDA MURPHY AS HEAD OF ENGINEERING



Enda Murphy, Head of Engineering, Ardmac

Specialist construction firm Ardmac has announced the appointment of Enda Murphy as its Head of Engineering.

In this role, Enda Murphy will be responsible for the management and support of the Design and Engineering Department at Ardmac and will manage the company's design and engineering teams to ensure that technical design and delivery is consistent on projects across the business, while also developing a continuous improvement environment within the organisation.

Enda Murphy, who joins Ardmac from a project manager role in the sector, has over 22 years' experience as an engineer.

"We are delighted to welcome Enda to the team at Ardmac," says Alan Coakley, Managing Director, Ardmac. "As we continue our focus on working with the brightest employees and ensuring innovative delivery of our projects, Enda's experience in engineering will be critical to our continued success."

"I am delighted to join the Ardmac team and look forward to working with our design and engineering teams on the vast scale of innovative and technical projects that Ardmac is involved with across Ireland, the UK and Europe," comments Enda Murphy.

Ardmac, who placed 18th in this year's Construction Top 50 CIF Contractors, employs over 300 people and provides specialist construction services to the commercial fit out, life sciences and data centre sectors. **C**

DATACENTRES IRELAND CONFERENCE 2018 TO ADDRESS IMPACT OF APPLE PLANNING DECISION

The DataCentres Ireland Conference will take place on 20th and 21st November at the RDS, Dublin. The conference will provide attendees with an opportunity to see why Ireland's programme of data centre rollout has been so successful and learn about current and future developments in the sector as well as the latest innovations that are on the horizon.

"Ireland offers companies some unique opportunities both as a country and as an access point to the European markets," says Gerry Connolly, founder and President of Host in Ireland, who will open the conference.

Last year's DataCentres Ireland Conference brought together over 1,400 business leaders, and industry professionals, and organisers are expecting to exceed that attendance figure with this year's busy programme.

The programme will feature local and international industry leaders and experts in their field with presentations, panel discussions, workshops, case studies and facilitated Q&A sessions to deliver valuable information on Ireland, the market and business opportunities as well as practical advice and ideas.

Issues to be addressed will include the Irish Opportunity – Regionally, Nationally and Internationally; Connectivity; Power Distribution and Green Energy; the Financing of Data Centres and IT Infrastructure Projects; and Data Sovereignty; as well as the burning issue of Irish Planning and Data Centres.

The programme will also have a technical stream, which will include presentations and panel discussions on data centre design and building; updating legacy data centres, cooling, cabling and codes and standards.



Panel discussion at DataCentres Ireland Conference 2017

Speakers already confirmed include Kevin Foley, Chief Financial Officer, Aqua Comms; Fergus Innes, Managing Director, IFSC; Diane Hodnett, independent consultant and Tanya Duncan, Managing Director, Interxion Ireland Ltd.

The DataCentres Ireland Exhibition is central to the event, providing a fulcrum around which it is staged. Attendees will be able to touch, feel, assess and discuss the latest in new technologies from the industry's most active suppliers and service providers.

Registration is free, and you can view the programme by visiting <https://www.datacentres-ireland.com/conference-programme>. **C**

To book your place, complete the online registration form at www.datacentres-ireland.com/registration/ or contact the DataCentres Ireland Team on +44 (0) 1892 518877, email: datacentres@stepex.com

FOR YOUR DIARY

Helping you plan ahead

Monday 3rd September 2018, 6:00pm – 8:00pm

GALWAY BRANCH MEETING

Location: Ardilaun House Hotel, Galway
Contact: Justin Molloy, Tel: 091 502680,
Email: jmolloy@cif.ie

Tuesday 4th September 2018, 10:00am – 12:00pm

IHBA NATIONAL COMMITTEE MEETING

Location: The Midlands Park Hotel, Portlaoise
Contact: Cathy Gurry, Tel: 01 406 6008,
Email: cgurry@cif.ie

Wednesday 5th September 2018, 1:00pm
PROCUREMENT TENDERING & CONTRACTUAL MATTERS COMMITTEE MEETING

Location: CIF Head Office, Construction House, Canal Road, Dublin
Contact: Denise Tuffy Tel: 01 406 6066,
Email: dtuffy@cif.ie

Monday 10th September 2018, 4:00pm
CECA EXECUTIVE COMMITTEE MEETING

Location: CIF Head Office, Construction House, Canal Road, Dublin
Contact: Denise Tuffy 01 406 6066, Email: dtuffy@cif.ie

Tuesday 11th September 2018, 2:30pm – 4:00pm

CONSTRUCTION 4.0 COMMITTEE MEETING

Location: CIF Head Office, Construction House, Canal Road, Dublin
Contact: Jennifer Nisbet-Daly, Tel: 01 406 6048, Email: jnisbetdaly@cif.ie

Tuesday 11th September 2018, 4:00pm – 6:00pm

MID WEST BRANCH MEETING

Location: Castletroy Park Hotel, Limerick
Contact: Brid Cody, Tel: 021 435 1410,
Email: bcody@cif.ie

Tuesday 11th September 2018, 4:00pm – 6:00pm

NORTH EAST BRANCH MEETING

Location: Gormanstown, Co Meath
Contact: James Benson, Tel: 01 406 6061,
Email: jbenson@cif.ie

Wednesday 12th September 2018, 7:00pm – 9:00pm

SOUTH EAST BRANCH MEETING

Location: Brandon House Hotel, New Ross
Contact: Ronan O'Brien, Tel: 021 435 1410,
Email: robrien@cif.ie

Wednesday 12th September 2018, 8:00pm
DONEGAL BRANCH MEETING

Location: Mount Errigal Hotel, Letterkenny
Contact: Justin Molloy, Tel: 091 502680,
Email: jmolloy@cif.ie

Tuesday 25th September 2018, 8:00pm
MIDLAND BRANCH MEETING

Location: Tullamore Court Hotel, Tullamore
Contact: Justin Molloy, Tel: 091 502680,
Email: jmolloy@cif.ie

Thursday 27th September 2018, 8:00pm – 10:00pm

NORTH WEST BRANCH MEETING

Location: Breaffy House Hotel, Castlebar
Contact: Justin Molloy, Tel: 091 502680,
Email: jmolloy@cif.ie

Tuesday 2nd October 2018, 9:00am
CIF CONFERENCE 2018

Location: Croke Park, Dublin
Contact: comms@cif.ie

Tuesday 2nd October 2018, 9:30am – 11:30am

CIRI INDUCTION TRAINING PROGRAMME

Location: Radisson Blu Hotel, Athlone
Contact: Lorraine Hosty, Tel: 01 406 6028,
Email: lhosty@cif.ie

Thursday 4th October 2018, 9:30am – 11:30am

CIRI INDUCTION TRAINING PROGRAMME

Location: Maldron Hotel, Sandy Road, Galway
Contact: Lorraine Hosty, Tel: 01 406 6028,
Email: lhosty@cif.ie

Monday 8th October 2018, 1:00pm
CORK BRANCH EXECUTIVE MEETING

Location: CIF Cork Office, Little Island, Cork
Contact: Brid Cody, Tel: 021 435 1410,
Email: bcody@cif.ie

Tuesday 9th October 2018, 9:30am – 11:30am

CIRI INDUCTION TRAINING PROGRAMME

Location: Radisson Blu Hotel, Sligo
Contact: Lorraine Hosty, Tel: 01 406 6028,
Email: lhosty@cif.ie

Wednesday 10th October 2018, 3:00pm
MBCA EXECUTIVE COUNCIL MEETING

Location: CIF Head Office, Construction House, Canal Road, Dublin
Contact: Denise Tuffy Tel: 01 406 6066,
Email: dtuffy@cif.ie

Tuesday 16th October 2018, 9:30am – 11:00am

ALLIANCE OF SPECIALIST CONTRACTORS ASSOCIATIONS (ASCA) MEETING

Location: CIF Head Office, Construction House, Canal Road, Dublin.
Contact: Gillian Ross, Tel: 01 406 6000,
Email: gillianr@cif.ie

Tuesday 16th October 2018, 11:00am
EXECUTIVE BODY MEETING.

Location: CIF Head Office, Construction House, Canal Road, Dublin
Contact: Gillian Heffernan,
Tel: 01 406 6016, Email: gheffernanr@cif.ie

Tuesday 23rd October 2018, 11:00am – 01:00pm

IHBA NATIONAL COMMITTEE MEETING

Location: CIF Head Office, Construction House, Canal Road, Dublin
Contact: Cathy Gurry, Tel: 01 406 6008,
Email: cgurry@cif.ie

Wednesday 24th October 2018, 1:00pm
PROCUREMENT TENDERING & CONTRACTUAL MATTERS COMMITTEE MEETING

Location: CIF Head Office, Construction House, Canal Road, Dublin
Contact: Denise Tuffy Tel: 01 406 6066,
Email: dtuffy@cif.ie

Monday 5th November 2018, 1:00pm
CORK BRANCH IHBA MEETING

Location: CIF Cork Office, Little Island, Cork
Contact: Brid Cody, Tel: 021 435 1410,
Email: bcody@cif.ie

Tuesday 6th November 2018, 2:30pm – 4:00pm

CONSTRUCTION 4.0 COMMITTEE MEETING

Location: CIF Head Office, Construction House, Canal Road, Dublin
Contact: Jennifer Nisbet-Daly, Tel: 01 406 6048, Email: jnisbetdaly@cif.ie

Tuesday 6th November 2018, 4:00pm – 6:00pm

MID WEST BRANCH MEETING

Location: Castletroy Hotel, Limerick
Contact: Brid Cody, Tel: 021 435 1410,
Email: bcody@cif.ie

Wednesday 7th November 2018, 7:00pm
SOUTH EAST BRANCH MEETING

Location: Tower Hotel, Waterford
Contact: Ronan O'Brien, Tel: 021 435 1410,
Email: robrien@cif.ie **C**

CIF TRAINING COURSES

CIF training and education programmes for September-October 2018

SEPTEMBER COURSES	CODE	DATE	DURATION	LOCATION
CIF Site Supervisor Safety Programme	SSSP 3295	6th September	2 Days	Dublin 6
CIF Site Supervisor Safety Programme	SSSP 3296	27th September	2 Days	Portlaoise
IR/HR for Construction Managers	IRHR 3450	27th September	2 Days	Limerick
Site Managers: A Practical Approach to Building Regulations	SMBR 3443	13th September	2 Days	Limerick
Environmental Management for Construction Focusing on Land/Waste/Water	EMC 3422	4th September	2 Days	Dublin 6
CIF IOSH Managing Safety in Construction	MSIC 3297	3rd September	5 Days	Portlaoise
CIF IOSH Managing Safety in Construction	MSIC 3298	6th September	5 Days	Dublin 6
CIF IOSH Managing Safety in Construction	MSIC 3433	7th September	5 Days	In House
CIF IOSH Managing Safety in Construction	MSIC 3300	12th September	5 Days	Waterford
CIF IOSH Managing Safety in Construction	MSIC 3299	14th September	5 Days	Galway
CIF QQI Building Control Course: Part B & Part J – Fire Safety [1] CSE 1	BCC 32524	25th September	10 Days	Dublin 6
CIF QQI Building Control Course: Part B & Part J – Fire Safety [2] CSE 1	BCC 32524	26th September	10 Days	Dublin 6
Payment Process Under the Construction Contracts Act 2013	PPCC	24th September	1 Day	Dublin
Appointed Persons Course	AP 3301	10th September	3 Days	Cork
Project Supervisor Construction Stage	PSCS 3302	11th September	3 Days	Dublin 6
IOSH Project Supervisor Design Process	PSDP 3303	20th September	2 Days	Dublin 6
Airtightness Programme	AT 3348	7th September		Dublin
CIF QQI Level 5 Safety Representative	SR 3440	20th-28th Sept	4 Days	Dublin 6
Presentation Skills	PS 3343	18th September	1 Day	Dublin 6
Environmental Management for Construction	EM 3376	18th September	1 Day	Dublin 6
Internal Auditing of Quality Systems	AQS 3344	26th September	1 Day	Dublin 6
Temporary Work: One-Day Programme	TW 3446	24th September	1 Day	Limerick
CIF Management & Inspection of Scaffold	SI 3304	28th September	1 Day	Dublin 6
CIF Core Safety Management Programme Renewal/CPD	CSMP 3305	21st September	Half day	Dublin 6
CIF Core Safety Management Programme Renewal/CPD	CSMP 3306	26th September	Half day	Co. Dublin
OCTOBER COURSES	CODE	DATE	DURATION	LOCATION
CIF Site Supervisor Safety Programme	SSSP 3307	11th October	2 Days	Limerick
CIF Site Supervisor Safety Programme	SSSP 3308	25th October	2 Days	Galway
Payment Process under the Construction Contracts Act 2013	PPCC	22nd October	1 Day	Athlone
PRINCE 2 Foundation Programme	P2F 3447	1st October	3 Days	Dublin 6
IR/HR for Construction Managers	IRHR 3448	25th October	2 Days	Galway
Site Managers: A Practical Approach to Building Regulations	SMBR 3444	11th October	2 Days	Dublin
CIF IOSH Managing Safety in Construction	MSIC 3309	2nd October	5 Days	Limerick
CIF IOSH Managing Safety in Construction	MSIC 3310	4th October	5 Days	Dublin 6
Building Control Course: Part E - Sound CSE 1	BCC 32525	23rd October	10 Days	Dublin 6
Building Control Course: Part G & Part H – Hygiene and Drainage CSE 1	BCC 32525	23rd October	10 Days	Dublin 6
CIF QQI Building Control Course: Part F & Part L – Ventilation & Conservation [1] CSE 1	BCC 32526	24th October	10 Days	Dublin 6
CIF QQI Building Control Course: Part F & Part L – Ventilation & Conservation [2] CSE 1	BCC 32526	25th October	10 Days	Dublin 6
Appointed Persons Course	AP 3311	8th October	3 Days	Limerick
Project Supervisor Construction Stage	PSCS 3421	3rd October	3 Days	Athlone
Project Supervisor Construction Stage	PSCS 3313	8th October	3 Days	Limerick
Project Supervisor Construction Stage	PSCS 3312	11th October	3 Days	Dublin 6
IOSH Project Supervisor Design Process	PSDP 3314	18th October	2 Days	Dublin 6
CIF Management & Inspection of Scaffold	SI 3315	26th October	1 Day	Cork



HIRE DESK

Tel: +353 1 626 8426

Fax: +353 1 626 8061



HEAD OFFICE/ ACCOUNTS DEPARTMENT

**Marina House,
Clarence Street,
Dun Laoghaire,
Co. Dublin.
A96WC79**

Tel: +353 1 663 7423

e-mail: accounts@cranehireltd.com

HIRE DESK / DUBLIN DEPOT

**Kylemore Park North,
Ballyfermot,
Dublin 10.
D10TN56**

Tel: +353 1 626 8426

e-mail: info@cranehireltd.com

HIRE DESK / CORK DEPOT

Tel: +353 21 603 0611

e-mail: info@cranehireltd.com

CRANE HIRE WIND ENERGY SERVICES LIMITED

**Marina House,
Clarence Street, Dun Laoghaire,
Co. Dublin.
96WC79**

Tel: +353 1 626 8360

e-mail: accounts@windenergyservices.ie

CRANE HIRE WIND ENERGY SERVICES UK LIMITED

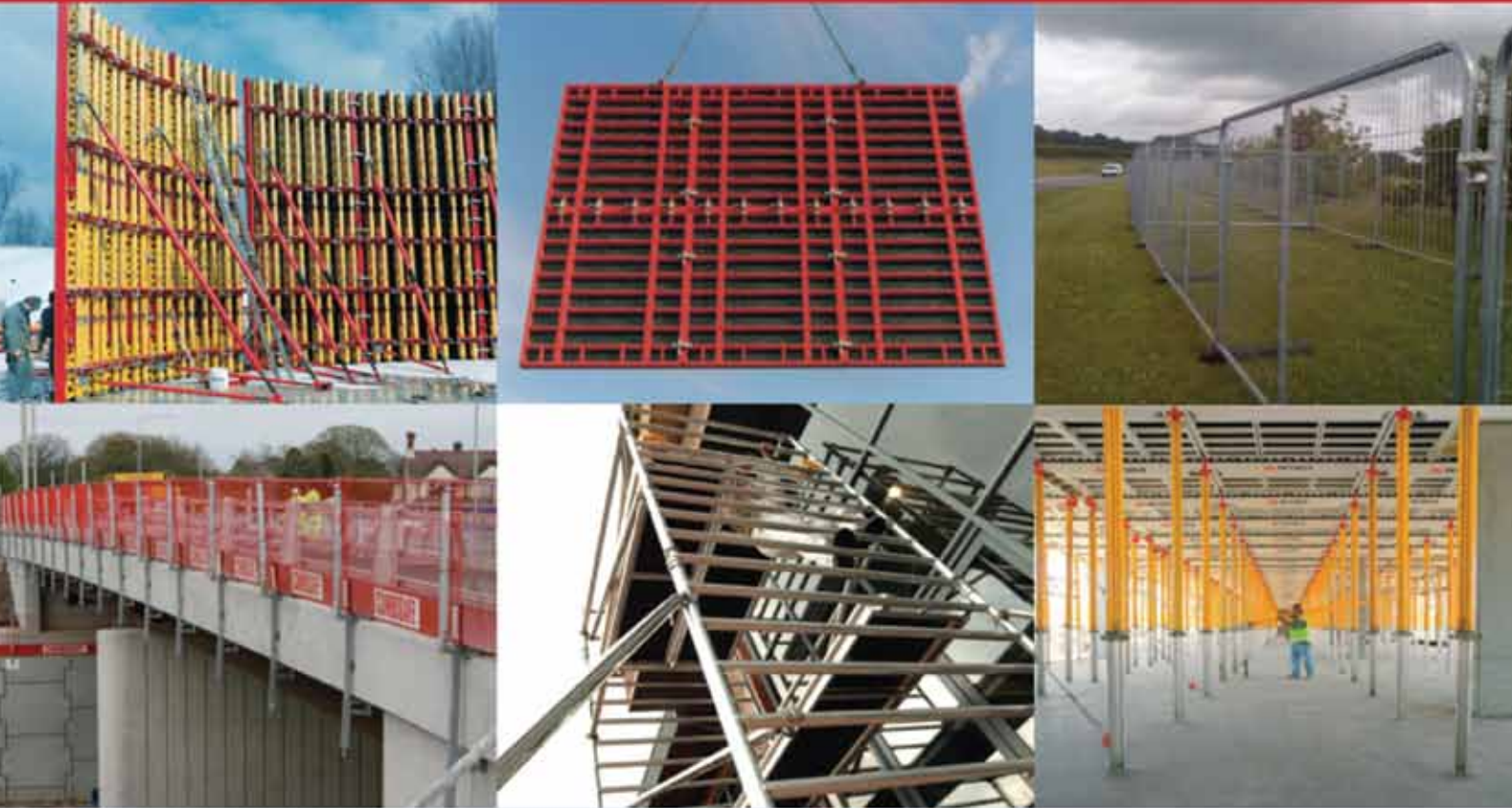
**4 Gransden Park,
Abbotsley,
St. Neots,
Cambridgeshire.
PE196TY**

Tel: +44 292 120 2796

e-mail: accounts@windpowerservices.eu

www.cranehireltd.com

Hire & Sales Solutions



Killeen Road Depot

Killeen Road, Dublin 12

TEL: 01 601 1500

FAX: 01 624 1650

WEB: www.actavo.com

Santry Depot

Old Airport Road,
Cloghran, Co. Dublin

TEL: 01 901 8690

WEB: www.actavo.com

Cork Depot

Unit 10, Sarsfield Court,
Silver Bullet Industrial Estate,
Glanmire, Co. Cork

TEL: 021 486 6400

FAX: 021 486 6610

WEB: www.actavo.com

Galway Depot

Airglooney Industrial Estate,
Ballygaddy Road,
Tuam, Co. Galway

TEL: 093 60470

FAX: 093 60477

WEB: www.actavo.com

- > Wall Shutter - Trio & Handset
- > Radius Shutter – Rundflex
- > Slab Deck – Multiprop & Skydeck
- > Climbing – CB240 & FB180
- > Combisafe Protection Systems

- > Smartguard Handrail Trestle System
- > Scaffolding
- > Ladders & Alloy Towers
- > Heavy Duty Shoring
- > Fencing & Barriers