



NETWORKS

# What Are The Critical Risk? Avoiding Dangers From Electricity

CIF Construction Safety Month 2023

**SAFE &  
SOUND**  
Because we care

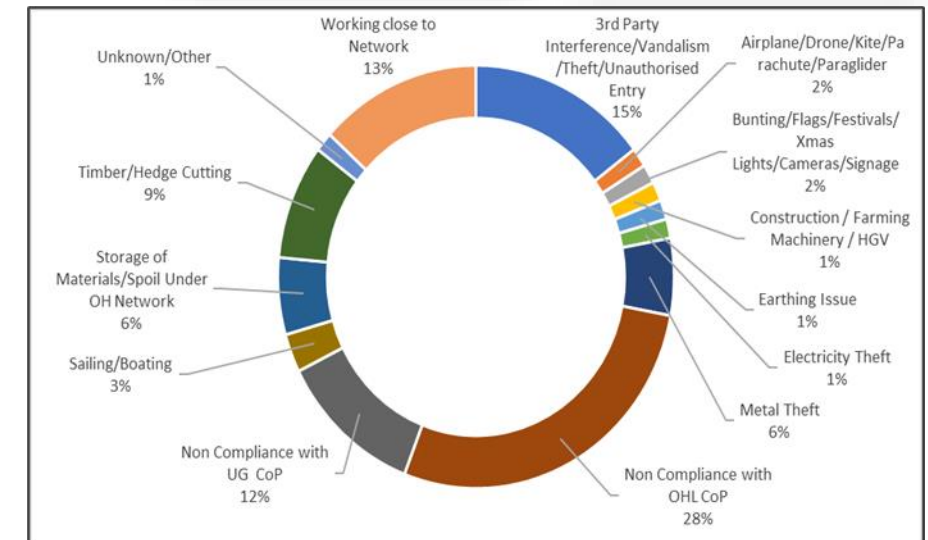
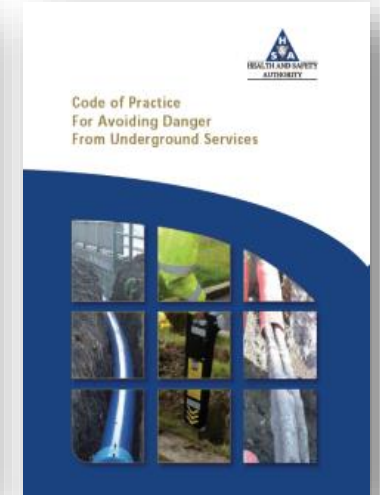


This presentation is for information purposes only and is not to be circulated or disseminated without the prior consent of ESB Networks' Public Safety Manager

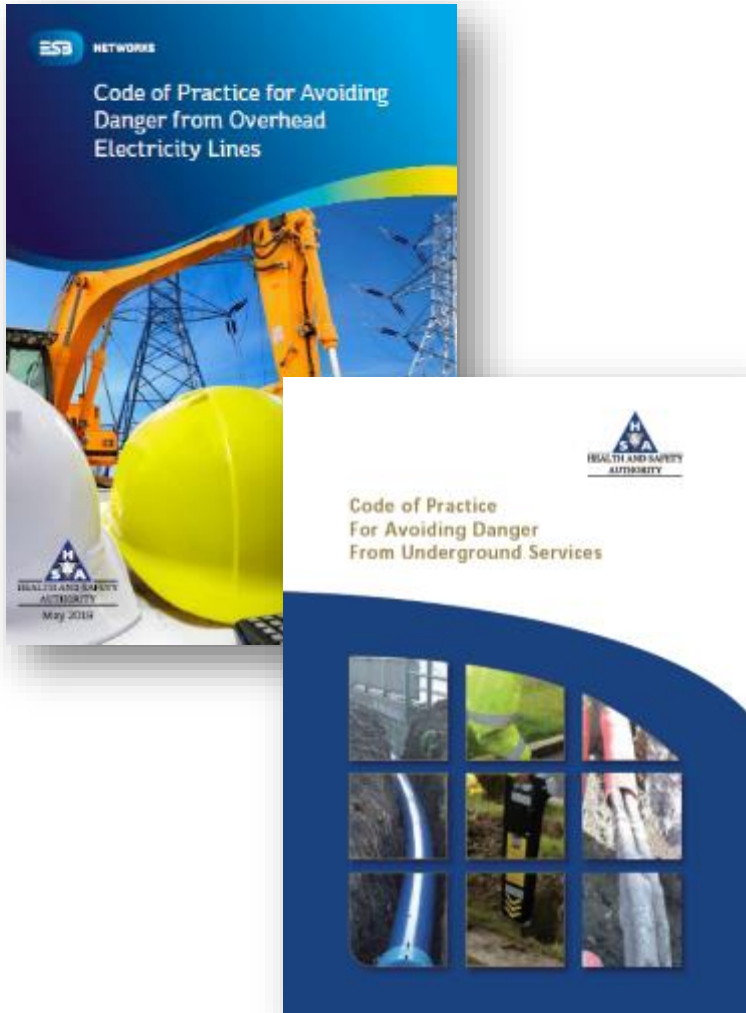
# Avoiding the Dangers of Electricity – Compliance is Key

**Coming in contact with overhead or underground electricity wires or cables is extremely dangerous. The power of electricity is such that any accidental contact or even coming close will result in serious injury can be fatal.**

- Compliance with the Health and Safety Authority Approved Codes of Practice in conjunction with your own documented safe systems of work will keep you and your fellow construction workers safe.
- The Codes of Practice are comprehensive safety documents which require that you understand all requirements and that you implement all the necessary controls to ensure the risk from the overhead and underground electricity network is managed effectively.
- For further safety information to help you stay safe and avoid the dangers of electricity please refer [www.esbnetworks/stayingsafe](http://www.esbnetworks/stayingsafe)



# Roles and Responsibilities & Practical Advice



- Sets out statutory requirements
- Gives practical advice to plant and machinery drivers and operators to avoid coming into contact with overhead electricity lines and underground services
- Safe System of Work
- Remember the importance of carrying out a risk assessment / SSWP for all work. Consider the hazard of electricity
- Always refer to Your Company documentation
- If an electricity cable, telecommunications cable, gas pipeline or water main suffers any impact or any damage, however slight, the incident must be reported to the network operator without any undue delay.



# Poor Construction Practices Put You At Risk

“

Always check for overhead wires before you start construction work. Serious accidents have occurred when using cranes, concrete delivery trucks, tipper trucks, scaffolding, telescopic lights or carrying long objects near overhead wires.

”





# Poor Construction Practices Put You At Risk



## Always Dial Before you Dig



### SAFE DIGGING

Email your request, with your site map to [dig@esb.ie](mailto:dig@esb.ie)

Call 1800 928 960

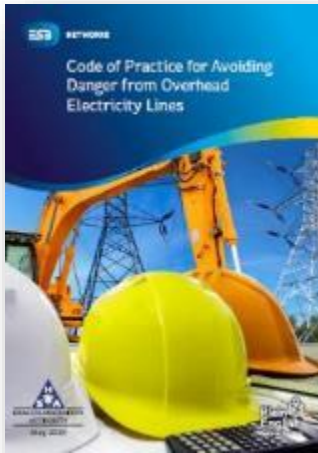


# Are You Feeling Lucky?



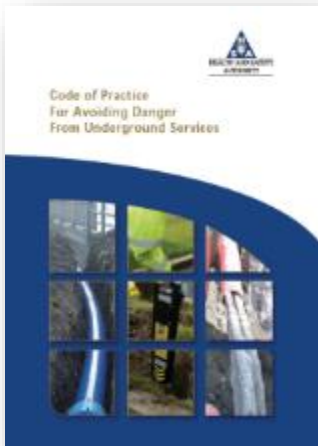


# Key Safety Takeaways from Today



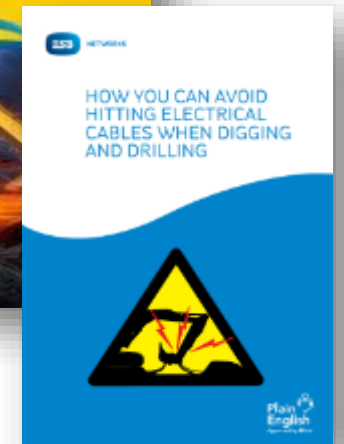
## Your Roles & Responsibilities

- Sets out statutory requirements
- Always Implement Safe System of Work
- Remember the importance of carrying out a risk assessment / SSWP for all work. Consider the hazard of electricity
- Always refer to Your Company documentation



- **Do** phone ESB Networks immediately at 1800 372 999 in case of an emergency.
- **Do** contact ESB Networks to obtain the relevant maps before construction.
- **Do** contact ESB Networks to request a switch out of the electricity networks to ensure safe working.
- **Do** remember that electricity wires are always live.
- **Do** stay clear of overhead electricity wires.
- **Do** identify the location of buried cables.
- **Do** follow the requirements set down in the relevant Codes of Practice.
- **Do** display safety stickers on machinery to remind everyone to be 'electricity safe'. Call 1800 372 757 to obtain these stickers.

- **Don't** work close to overhead wires.
- **Don't** disturb underground cables.
- **Don't** undermine pole or mast foundations.
- **Don't** touch or come near to fallen wires.
- **Don't** approach or touch anything that may be in contact with electricity wires.



<https://www.esbnetworks.ie/staying-safe/staying-safe>

# If The Worst Happens....



## FOR EMERGENCIES CALL 1800372999

Visit [esbpowercheck.ie](https://esbpowercheck.ie)  
for real time fault  
information

**Remember!** Always stay  
safe and stay clear of the  
electricity network

General Enquiries: 1800 372 757  
Mon-Fri (8.30am - 6pm) Sat (8.30am-1.30pm)





*Thank You*



NETWORKS