

# LESSONS LEARNED / BEST PRACTICE



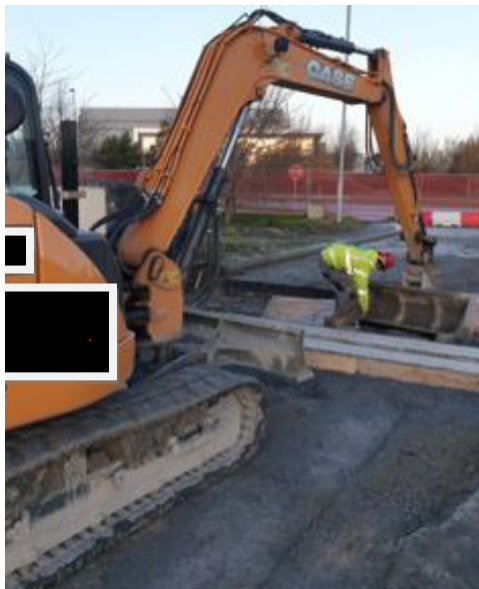
**Title:** 2020/04 – Hand Crush Injury

## What Happened?

Civils operatives were completing housekeeping duties and removing shuttering from a concrete pad adjacent to a site entrance when an injury occurred.

Operatives were removing 1-meter kerbs from the shutter. The excavator driver was attempting to pick-up a kerb with the bucket of the machine when the injured person entered the red zone to assist the machine driver by lifting the front of the kerb into the excavator bucket. Subsequently, the excavator driver manoeuvred the bucket and caught the worker's left hand between the kerb and the bucket, causing injury. The injured worker shouted to alert the driver who pulled the machine back.

The injured person was brought to the First-Aid office at site where his injury was assessed and bandaged. The worker was then referred to a clinic for the undertaking of an x-ray, which indicated a fractured bone in two fingers. The injured person was then to a hospital for further review.



*Figure 1: Reconstruction of accident*



*Figure 2: Hand injury*

## Immediate Learnings / Recommendations

1. The sequence of work was reviewed with the civils crew. It was agreed where practicable that kelly-blocks with additional supports would be used for future tasks of this nature.
2. The associated RAMS (risk assessment method statement) & SPA (safe plan of action) were updated to ensure the associated risks and control measures for the task are clearly identified and communicated to the civils crew.
3. Appropriate parties were notified of the injury.
4. An RCA (Root Cause Analysis) was undertaken to fully investigate the injury and to ensure appropriate preventative actions were adopted.
5. A Toolbox-Talk was conducted with the civils crew in relation to investigation findings, risks associated with the task and preventative measures.